

Fig. 6(1) DNA cleavage of Schiff base, [BCAP] and their Cu(II), Ni(II), Zn(II), Cd(II) and Hg(II) complexes



Fig. 6(2) DNA cleavage of Schiff base [BCACP] and their Cu(II), Co(II), Zn(II), Cd(II) and Hg(II) complexes

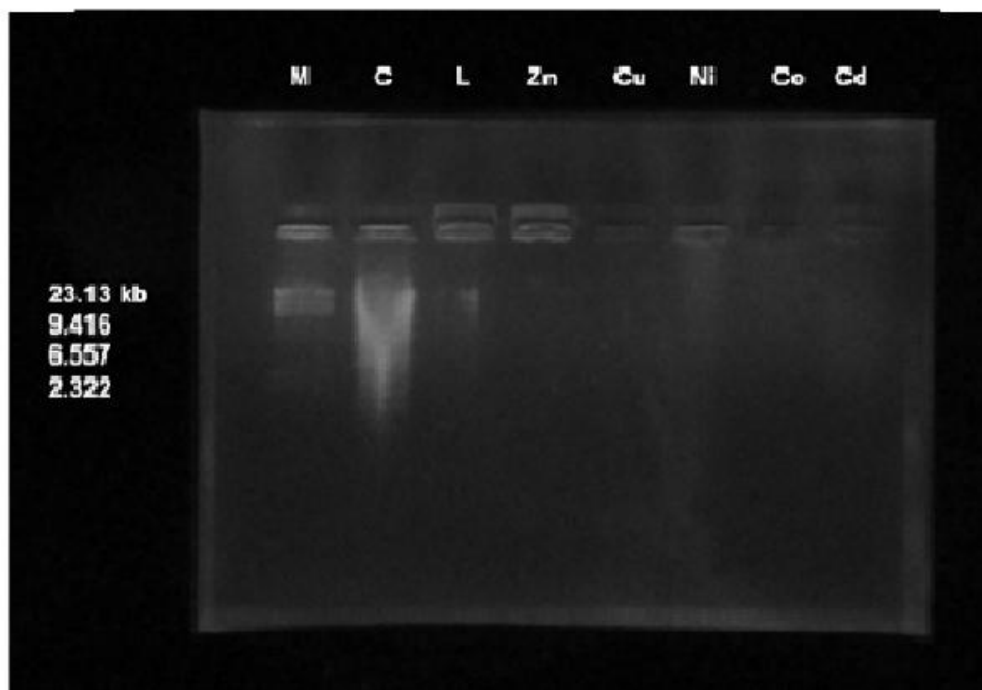


Fig. 6 (3) DNA cleavage of Schiff base [BCMeTPC] and their Cu(II), Co(II), Ni(II), Zn(II) and Cd(II) complexes

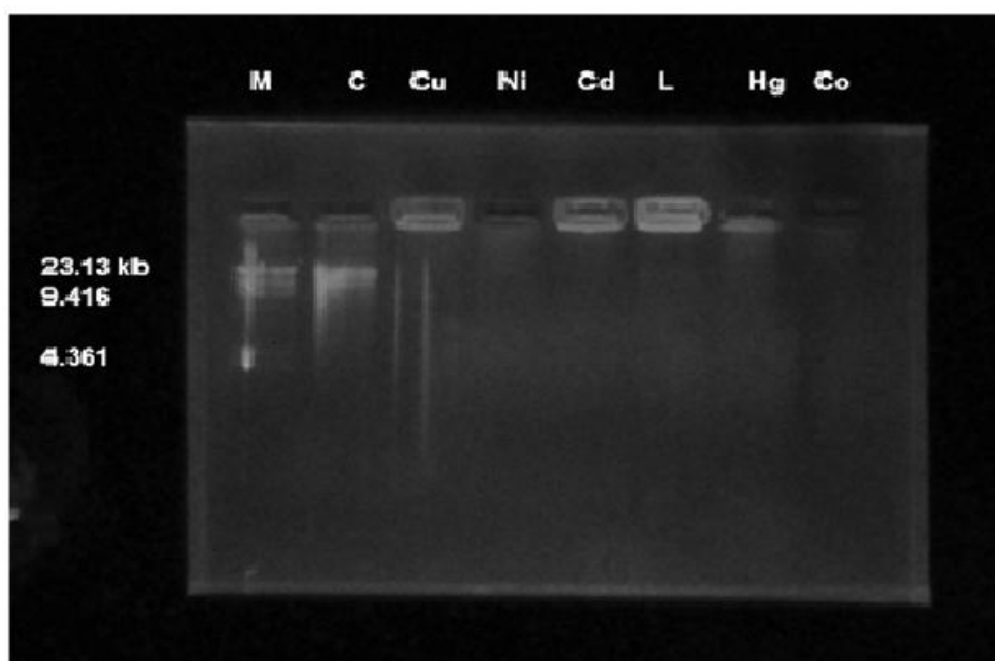


Fig. 6(4) DNA cleavage of Schiff base [BCMeTB] and their Cu(II), Co(II), Ni(II), Cd(II) and Hg(II) complexes