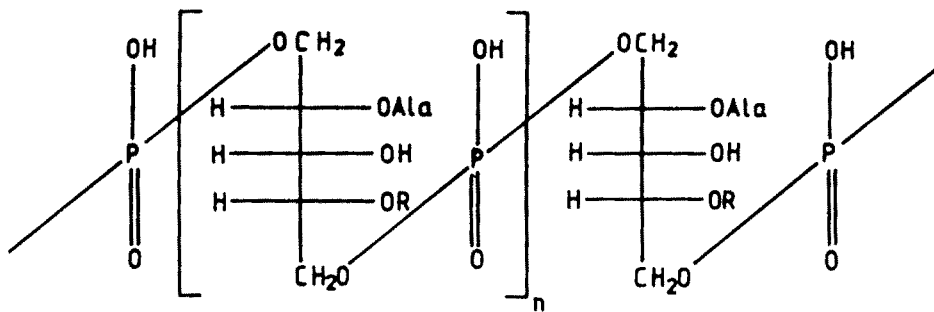
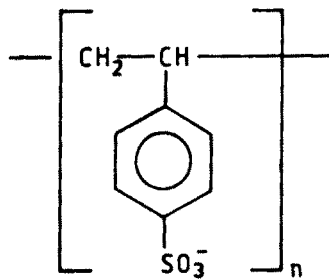


STRUCTURAL FORMULAE OF THE POLYANIONS

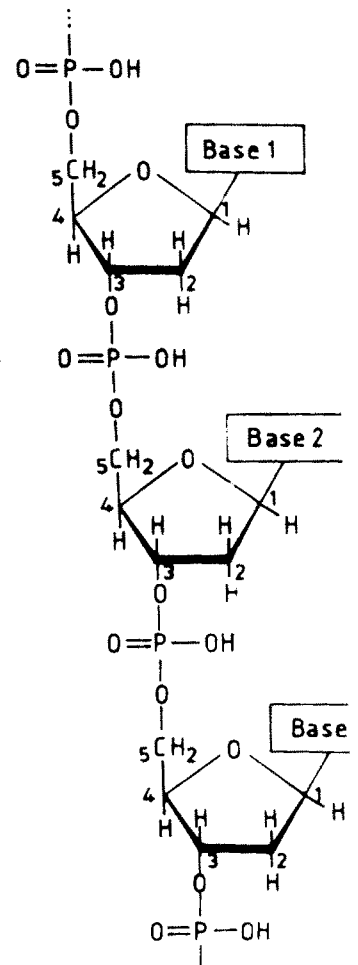


R = N-acetylglucosaminy
Ala = Alanine

Teichoic acid (TA)

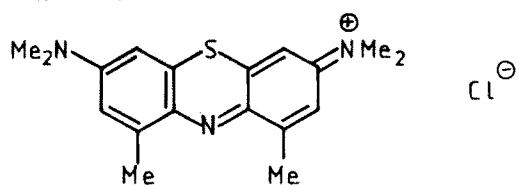


Poly (styrene sulfonate) (PSS)

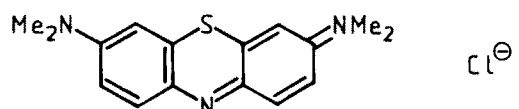


DNA

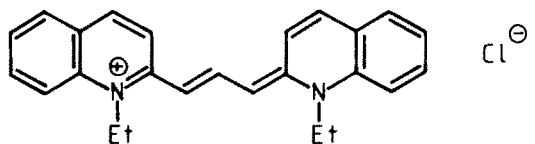
STRUCTURAL FORMULAE OF THE DYES



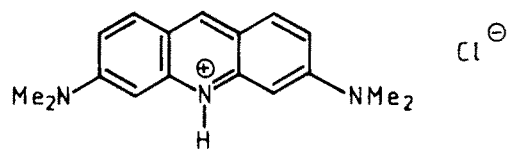
1,9 - dimethyl methylene blue (DMMB)



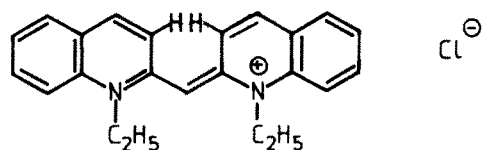
Methylene blue (MB)



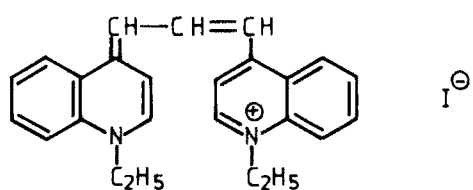
Pinacyanol chloride (PCYN)



Acridine orange (AO)



N,N' diethyl pseudo isocyanine (PIC)



Carboyanine iodide (CCI)

STRUCTURAL FORMULAE OF THE DRUGS

