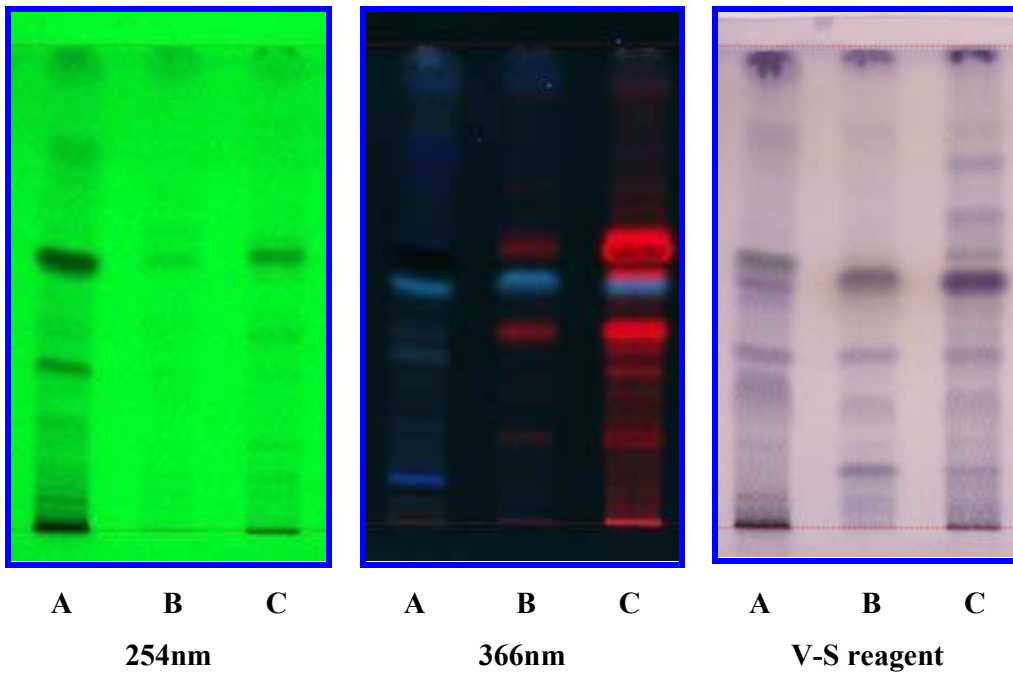


Fig. 1 - TLC profile of Petroleum ether extract



Track – 1: *C. retusa* – Root; Track – 2: *C. retusa* – Stem;

Track – 3: *C. retusa* – Leaf

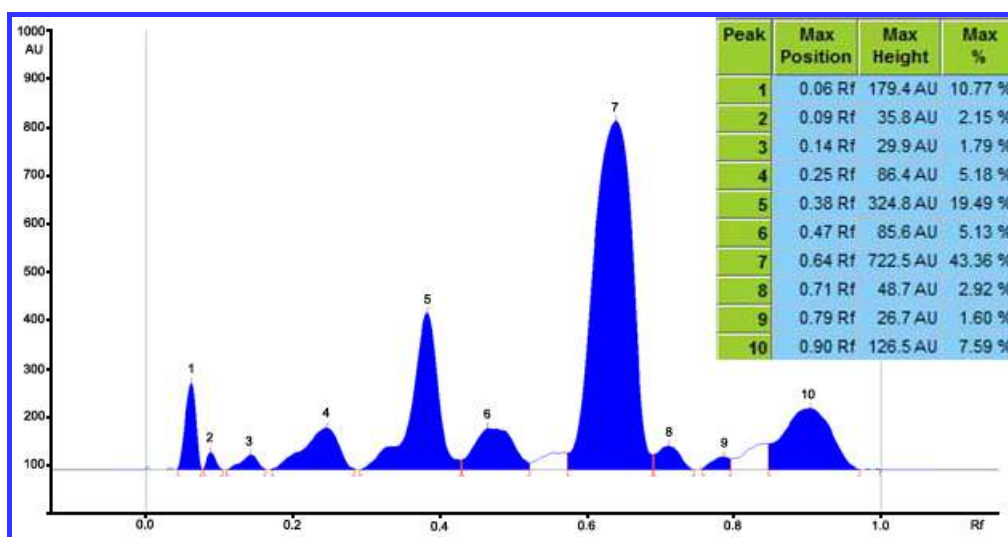


Fig. 2. HPTLC Finger print profile of petroleum ether extract of root.

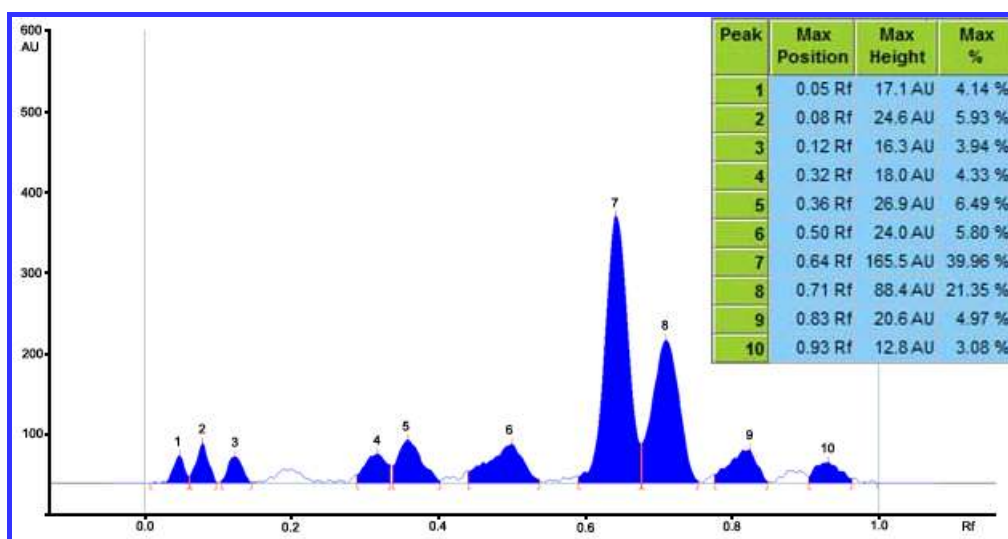


Fig. 3. HPTLC Finger print profile of petroleum ether extract of stem.

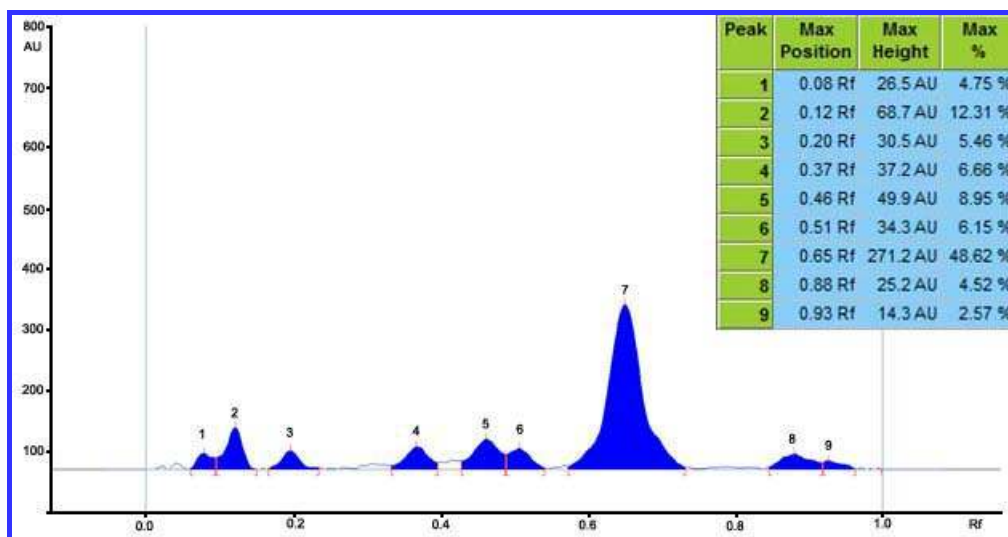


Fig. 4. HPTLC Finger print profile of petroleum ether extract of leaves.

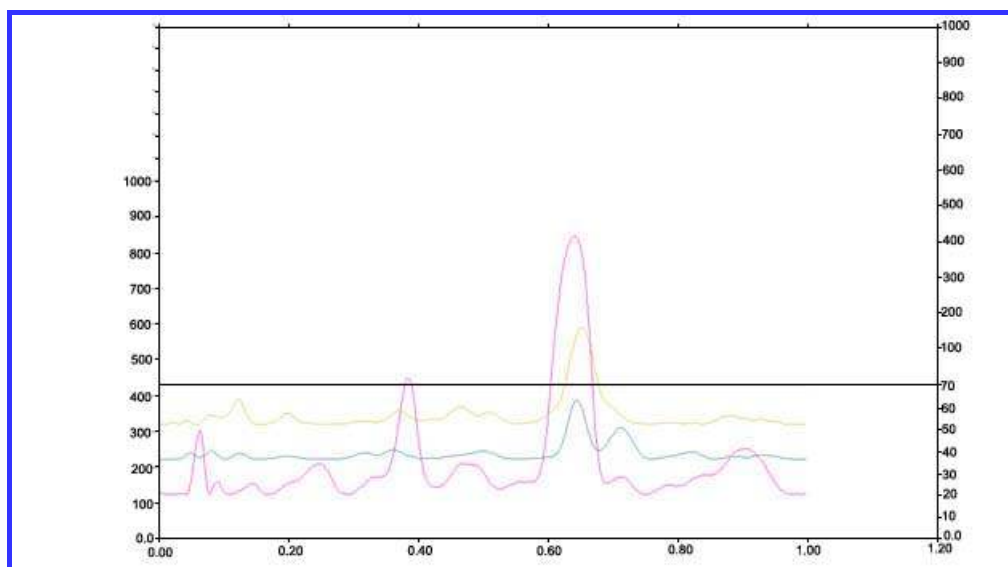
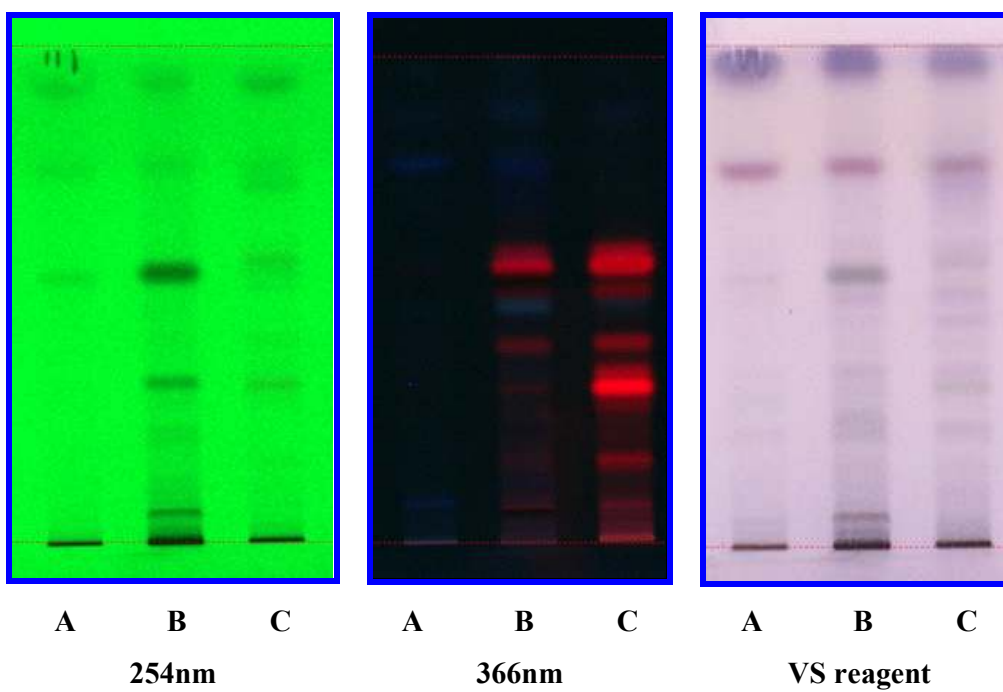


Fig. 5. – Densitometric chromatogram of petroleum ether extracts of root, stem and leaves.

Fig. 6 - TLC profile of Chloroform extract



Track - 1: *C. retusa* - Root; Track - 2: *C. retusa* - Stem;
Track - 3: *C. retusa* - Leaves

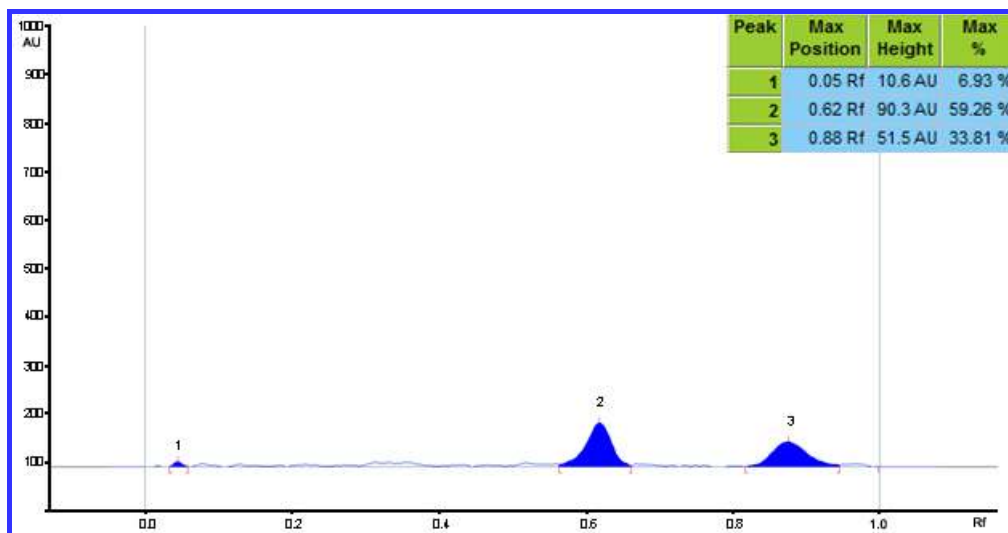


Fig. 7. HPTLC Finger print chromatogram of chloroform extract of root.

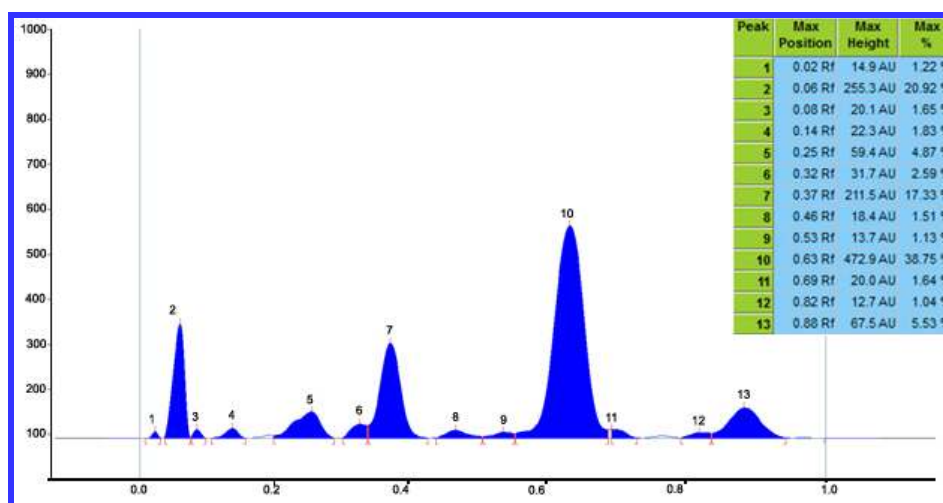


Fig. 8. HPTLC Finger print profile of chloroform extract of stem.

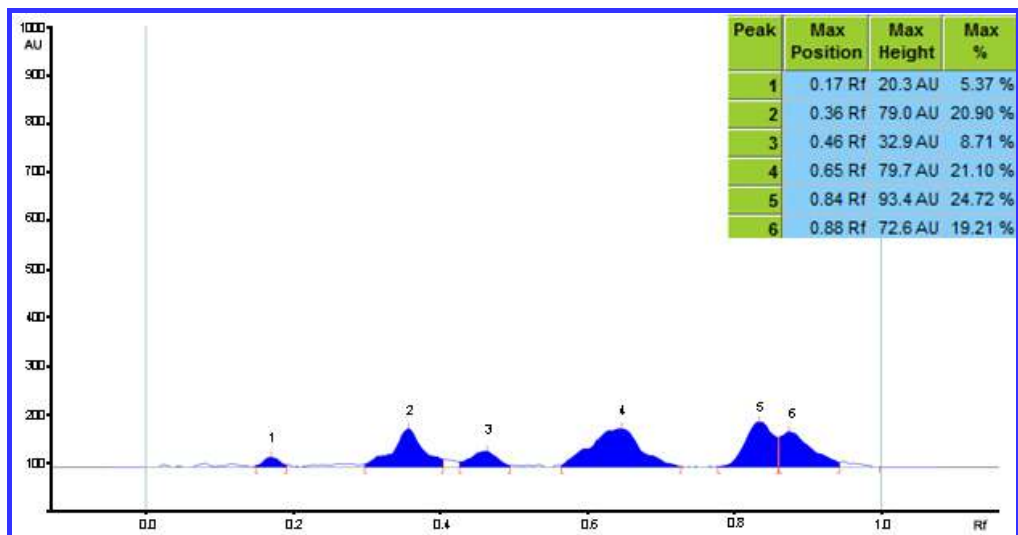


Fig. 9. HPTLC Finger print profile of chloroform extract of leaves.

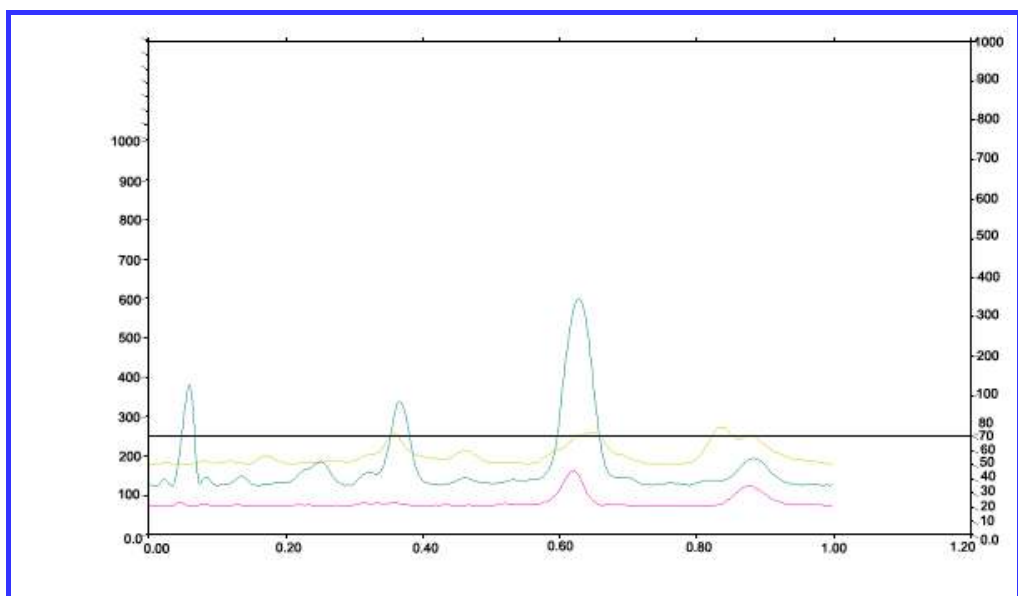
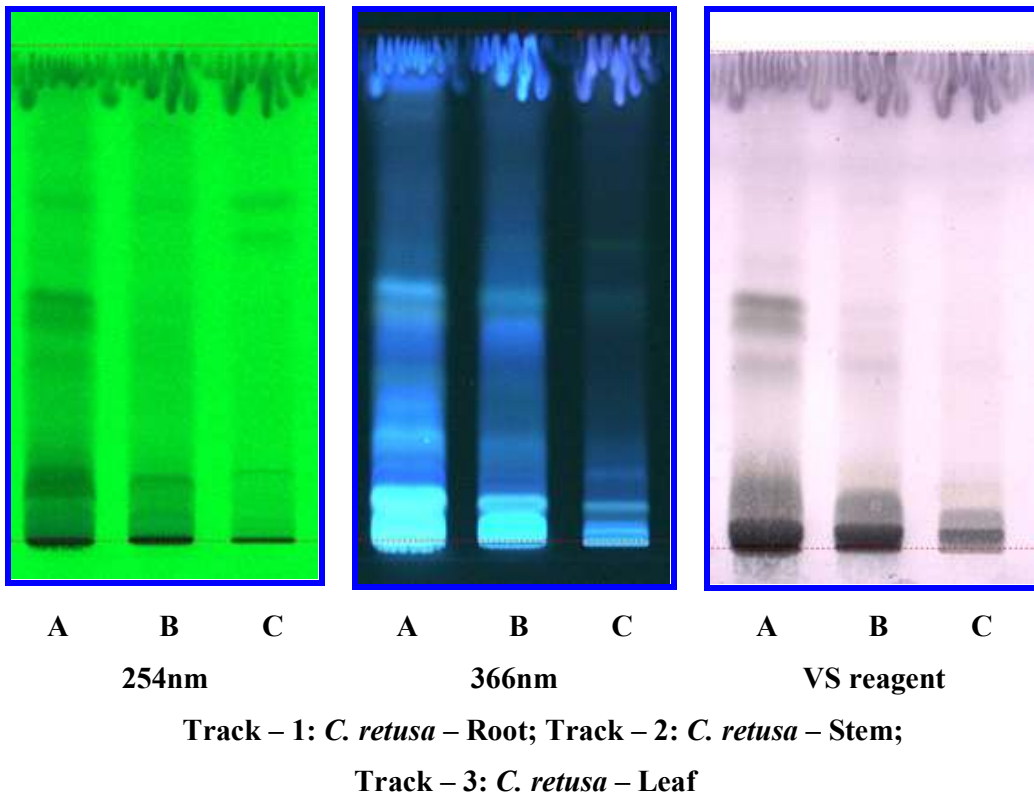


Fig. 10. – Densitometric chromatogram of chloroform extract of root, stem and leaves.

Fig. 11 - TLC profile of Alcohol extract



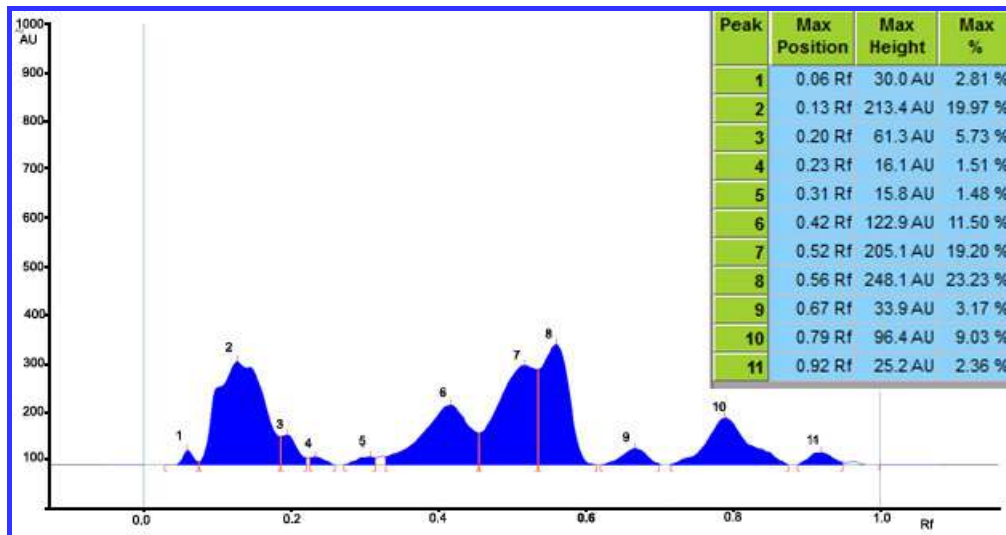


Fig. 12. HPTLC Finger print profile of alcohol extract of root.

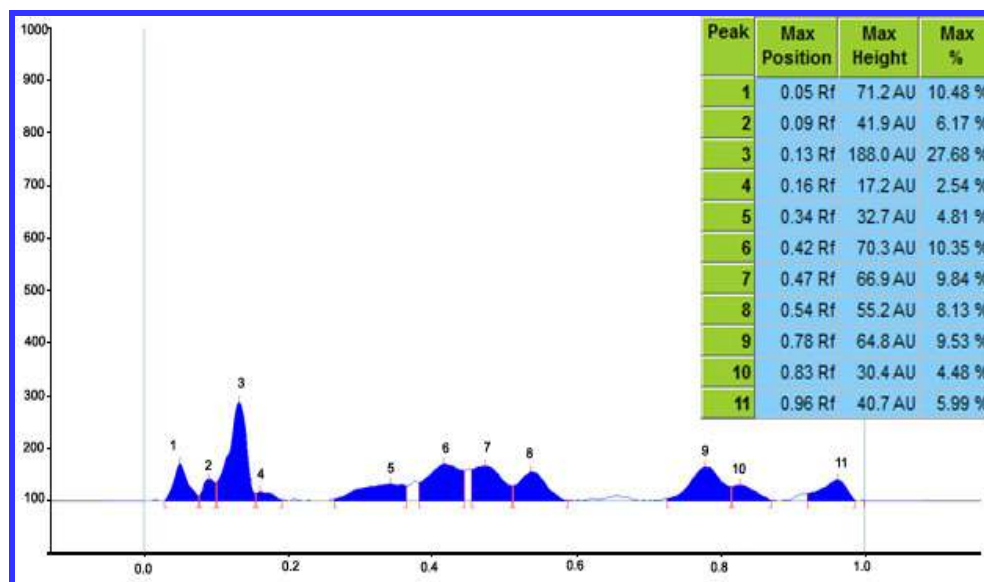


Fig. 13. HPTLC Finger print profile of alcohol extract of stem.

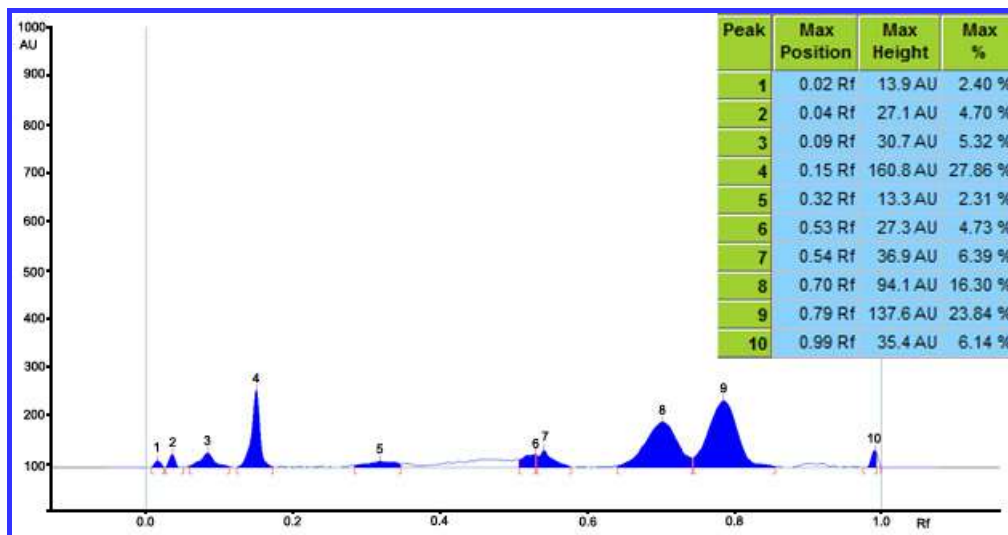


Fig. 14. HPTLC Finger print profile alcohol extract of leaves.

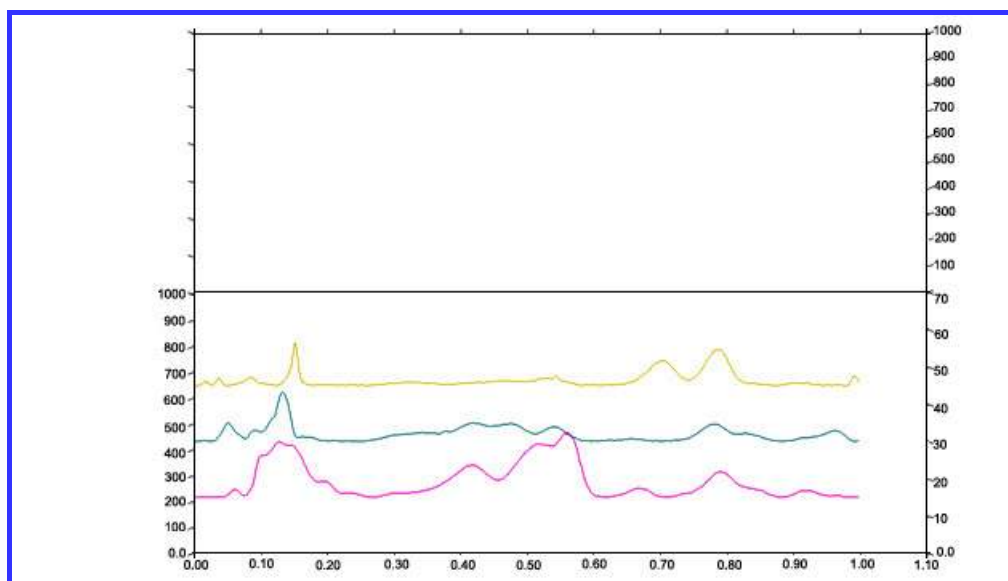


Fig. 15. – Densitometric chromatogram of alcohol extract of root, stem and leaves,