

CHAPTER IV

DATA ANALYSIS AND INTERPRETATION

This chapter consists of five sections:

Section- I: - Percentage distribution of socio-demographic variables.

Section- II: - Percentage Mean and Standard Deviation of the four domains related to physical, psychological, social and spiritual aspects of children suffering from AIDS, which consists of six components related to the psychosocial variables and its sub-scales: -

(a) Physical-health functioning (b) Medication (c) Pain Assessment

(d) Social Support (e) Psychological (f) Spiritual. This also includes their principal care-givers suffering from AIDS, which are related to the five components:-

1. Physical domain includes 'diagnosis-health functioning' 2. Social domain-includes 'social support', 3. Family- includes 'family concerns' 4. psychological domain includes 'psychological' aspects and the spiritual domain includes 'spiritual aspects'.

Section- III: - Statistical computation of ANOVA: - independent 't' test was utilized to analyze the four domains namely physical, psychological, social, and spiritual aspects of children suffering from AIDS and their principal care-givers.

Section- IV: - Association between the socio-demographic data and psychosocial variables and its sub-scales related to the four domains namely physical, psychological, social, and spiritual aspects of children suffering from AIDS and their principal care-givers.

Section- V: - Karl Pearson's Co-efficient of Correlation was statistically computed to analyze the association between the psychosocial variables and its sub-scales related to the four domains namely physical, psychological, social, and spiritual aspects of children suffering from AIDS and their principal care-givers.

TABLE I
SOCIO-DEMOGRAPHIC DATA SHOWING THE MEAN AND STANDARD
DEVIATION OF VARIOUS VARIABLES INCLUDED IN THE STUDY IN RELATION
TO THE EDUCATIONAL STATUS OF THE CHILDREN SUFFERING FROM AIDS

n-300

Variables	Educational Status of the child	Mean	Std. Deviation	't'	Significance
Physical-Health Functioning	Literate	17.67	1.60	.516	.606 NS P>0.05
	Illiterate	17.77	2.03		
Medication	Literate	8.37	.99	.226	.822 NS P>0.05
	Illiterate	8.40	1.12		
Pain Assessment	Literate	15.39	1.63 1.75	.856	.392 NS P>0.05
	Illiterate	15.23			
Social Support	Literate	15.41	1.85	1.150	.251 NS P>0.05
	Illiterate	15.13	2.23		
Psychological	Literate	12.43	1.42	.199	.842 NS P>0.05
	Illiterate	12.40	1.41		
Spiritual	Literate	13.07	2.31	.097	.922 NS P>0.05
	Illiterate	13.04	1.95		

INTERPRETATION:

Table I: - Indicates that the variables related to Physical-Health Functioning, medication, pain assessment, social support, psychological, and spiritual are all insignificant to the educational status of the children suffering from AIDS.

TABLE II

SOCIO-DEMOGRAPHIC DATA SHOWING THE MEAN AND STANDARD DEVIATION OF VARIOUS VARIABLES INCLUDED IN THE STUDY IN RELATION TO THE EDUCATIONAL STATUS OF THE CHILDREN SUFFERING FROM AIDS

Variables /Educational status	Mean	Std. Deviation	F	Significance
Physical-Health Functioning	17.46	1.57	2.699	.070
Upto3rd std	18.03	1.63		NS
4-7 std	17.50	.58		
8-10std	17.67	1.60		
Medication	8.32	1.03	.341	.712
Upto3rd std	8.45	.95		NS
4-7 std	8.50	.58		
8-10std	8.37	.99		
Pain Assessment	15.32	1.62	.725	.486
Upto3rd std	15.55	1.67		NS
4-7 std	14.75	1.26		
8-10std	15.39	1.63		
Social Support	15.23	1.84	1.585	.208
Upto3rd std	15.66	1.86		NS
4-7 std	16.25	1.50		
8-10std	15.41	1.85		
Psychological	12.32	1.42	1.697	.186
Upto3rd std	12.55	1.43		NS
4-7 std	13.50	1.00		
8-10std	12.43	1.42		
Spiritual	13.05	2.27	.075	.928
Upto3rd std	13.08	2.46		NS
4-7 std	13.50	1.00		
8-10std	13.07	2.31		

INTERPRETATION:

Table II: - All the variables related to physical-health functioning, medication, social support Psychological, Spiritual related to the educational status of the children are insignificant.

TABLE III

**SOCIO-DEMOGRAPHIC DATA SHOWING THE MEAN AND STANDARD
DEVIATION OF VARIOUS VARIABLES INCLUDED IN THE STUDY IN RELATION
TO THE SEX OF THE CHILDREN SUFFERING FROM AIDS**

n-300

Variables	Sex of the Children	Mean	Std. Deviation	't'	Significance
Physical health Functioning	Male	17.82	1.78	1.379	.169
	Female	17.53	1.77	1.381	.169
					(NS) P>0.05
Medication	Male	8.33	1.03	1.153	.250
	Female	8.47	1.07	1.143	.254
					(NS) P>0.05
Pain Assessment	Male	15.13	1.62	2.689	.008
	Female	15.66	1.73	2.642	.009
					(S) P<0.01
Social Support	Male	15.38	2.05	.904	.366
	Female	15.16	1.93	.918	.359
					P>0.05 (NS)
Psychological	Male	12.43	1.49	.172	.864
	Female	12.40	1.28	.178	.859
					(S) P<0.05
Spiritual	Male	12.95	2.22	1.134	.258
	Female	13.24	2.10	1.149	.252
					P>0.05 (NS)

INTERPRETATION: -

Table III: - Indicates that the variables of Pain assessment and psychological which are significant and other variables of physical health-functioning, medication, Social support and spiritual are insignificant.

TABLE IV
SOCIO-DEMOGRAPHIC DATA SHOWING THE MEAN AND STANDARD DEVIATION OF
VARIOUS VARIABLES INCLUDED IN THE STUDY IN RELATION TO THE AGE OF THE
CHILDREN SUFFERING FROM AIDS

n-300

Variables	Mean	Std. Deviation	F	Significance
Physical- Health				
0-5 Year	17.59	1.54	1.167	.323 (NS) P>05.05
6-10Year	17.99	2.25		
11-15Year	17.46	1.81		
15 years & above	18.00	1.54		
Total	17.71	1.78		
Medication				
0-5 Year	8.44	1.06	1.004	.391 (NS) P>05.05
6-10	8.23	1.03		
11-15	8.62	1.04		
15 years & above	8.33	.89		
Total	8.38	1.04		
Pain Assessment				
0-5 Year	15.30	1.66	.152	.929 (NS) P>05.05
6-10	15.42	1.84		
11-15	15.23	1.42		
15 years & above	15.17	1.03		
Total	15.33	1.68		
Social Support				
0-5 Year	15.06	2.15	2.824	.039 (S) P<0.05
6-10	15.76	1.61		
11-15	15.92	1.50		
15 years & above	15.17	2.08		
Total	15.30	2.01		
Psychological				
0-5 Year	12.27	1.40	2.838	.038 (S) P<0.05
6-10	12.80	1.27		
11-15	12.46	2.03		
15 years & above	12.17	1.59		
Total	12.42	1.42		
Spiritual				
0-5 Year	13.10	1.93	.697	.555 (NS) P>05.05
6-10	13.08	2.63		
11-15	13.08	2.66		
15 years & above	12.17	1.80		
Total	13.06	2.17		

INTERPRETATION: Table IV: The variables of social support and psychological are significant. All the other variables of physical health, medication, pain assessment and spiritual are insignificant to the age group of the children suffering from AIDS. And this indicates that the age of the child is immaterial to the diagnosis of the illness (AIDS).

TABLE V

THE ASSOCIATED VARIABLES OF PAIN ASSESSMENT, SOCIAL SUPPORT, PSYCHOLOGICAL, SPIRITUAL SHOWING THE MEAN, STANDARD DEVIATION AND KARL-PEARSON’S CORRELATION OF THE CHILDREN SUFFERING FROM

AIDS

n-300

Variables	Mean	Std. Deviation	Correlation	Significance.
Pair Diagnosis – health functioning	29.77	2.40	.240	.000 P<0.01(S)
1 Social Support	13.80	1.96		
Pair Diagnosis – health functioning	29.77	2.40	.187	.001 P<0.01(S)
2 family	22.53	2.34		
Pair Diagnosis – health functioning	29.77	2.40	.064	.267 P>0.05 (NS)
3 Psychology	16.29	2.24		
Pair Diagnosis – health functioning	29.77	2.40	.171	.003 P<0.01(S)
4 Spiritual	12.92	2.09		
Pair Social Support	13.80	1.96	.028	.635 P>0.05 (NS)
5 Family	22.53	2.34		
Pair Social Support	13.80	1.96	.050	.390 P>0.05 (NS)
6 Psychology	16.29	2.24		
Pair Social Support	13.80	1.96	.158	.006 P<0.01 (S)
7 Spiritual	12.92	2.09		
Pair family	22.53	2.34	.094	.106 P>0.05 (NS)
8 Psychology	16.29	2.24		
Pair family	22.53	2.34	.014	.807 P>0.05 (NS)
9 Spiritual	12.92	2.09		
Pair Psychology	16.29	2.24	.000	.999 P>0.05 (NS)
10 Spiritual	12.92	2.09		

INTERPRETATION:

Table V:

Indicates the paired samples association between diagnosis-health functioning and social support, diagnosis-health functioning and family, diagnosis -health functioning and spiritual, social support and spiritual are all significant. And Karl Pearson’s correlation is positive. The other paired samples association between diagnosis-health-functioning and psychological, social support and family, social support and psychological, family and psychological family and spiritual, psychological and spiritual are all insignificant.

TABLE VI

THE ASSOCIATED VARIABLES OF PAIN ASSESSMENT, SOCIAL SUPPORT, PSYCHOLOGICAL, SPIRITUAL SHOWING THE MEAN, STANDARD DEVIATION AND KARL-PEARSON'S CORRELATION OF THE CHILDREN SUFFERING FROM AIDS

n-300

Variables		Mean	Std. Deviation	Correlation	Significance.
Pair 1	Physical- Health functioning Medication	17.71 8.38	1.78 1.04	.302	.000
Pair 2	Physical- Health functioning Pain Assessment	17.71 15.33	1.78 1.68	.192	.001
Pair 3	Physical-Health functioning Social Support	17.71 15.30	1.78 2.01	.230	.000
Pair 4	Physical- Health functioning Psychological	17.71 12.42	1.78 1.42	.059	.307
Pair 5	Physical- Health functioning Spiritual	17.71 13.06	1.78 2.17	.063	.276
Pair 6	Medication Pain Assessment	8.38 15.33	1.04 1.68	.303	.000
Pair 7	Medication Social Support	8.38 15.30	1.04 2.01	.057	.323
Pair 8	Medication Psychological	8.38 12.42	1.04 1.42	.081	.162
Pair 9	Medication Spiritual	8.38 13.06	1.04 2.17	.173	.003

INTERPRETATION:

Table VI: - Indicates that the paired samples association between physical-health functioning and medication, physical-health functioning and pain assessment, physical –health functioning and social support, medication and pain assessment, medication and spiritual are all significant And Karl Pearson's correlation is positive. The other paired samples association between physical-health functioning and psychological, physical-health functioning and spiritual, medication and social support, medication and psychological are all insignificant.

TABLE VII
THE ASSOCIATED VARIABLES OF PAIN ASSESSMENT, SOCIAL SUPPORT,
PSYCHOLOGICAL, SPIRITUAL SHOWING THE MEAN, STANDARD DEVIATION
AND
KARL-PEARSON'S CORRELATION OF THE CHILDREN SUFFERING FROM AIDS

n-300

Variables		Mean	Std. Deviation	Correlation	Significance
Pair 1	Pain Assessment Social Support	15.33 15.30	1.68 2.01	.013	.825(NS) P>0.05
Pair 2	Pain Assessment Psychological	15.33 12.42	1.68 1.42	.020	.731(NS) P>0.05
Pair 3	Pain Assessment Spiritual	15.33 13.06	1.68 2.17	.197	.001 (S)
Pair 4	Pain Assessment Spiritual	15.33 13.06	1.68 2.17	.197	.001(S)
Pair 5	Social Support Psychological	15.30 12.42	2.01 1.42	.481	.000(S)
Pair 6	Social Support Spiritual	15.30 13.06	2.01 2.17	.106	.066 (NS) P>0.05
Pair 7	Psychological Spiritual	12.42 13.06	1.42 2.17	.244	.000(S) P<0.01

INTERPRETATION:

Table VII: - Indicates the paired samples association between pain assessment and spiritual, social support and psychological, psychological and spiritual, are all significant and Karl Pearson's correlation is positive. The other paired samples of pain assessment and social support, pain assessment and psychological, social support and spiritual are insignificant.

TABLE: I

SOCIO-DEMOGRAPHIC DATA SHOWING THE MEAN AND STANDARD DEVIATION OF VARIOUS VARIABLES INCLUDED IN THE STUDY IN RELATION TO THE AGE OF THE PRINCIPAL CARE-GIVERS OF CHILDREN SUFFERING

FROM AIDS

n-300

Variables	Age of P.C.G.'s	Mean	Std. Deviations	F-test	Significance
Diagnosis Health Functioning	20-30 years	29.51	2.44	6.227	.000 P<0.001 (S)
	31-40 years	30.53	1.96		
	41-50 years	31.92	1.19		
	51-60 years	30.00	-		
	Total	29.77	2.40		
Social Support	20-30 years	13.64	1.88	6.839	.000 P<0.001 (S)
	31-40 years	13.96	1.99		
	41-50 years	16.08	2.06		
	51-60 years	14.00	-		
	Total	13.80	1.96		
Family	20-30 years	22.57	2.38	.302	.824 P>0.05 (NS)
	31-40 years	22.33	2.30		
	41-50 years	22.31	1.75		
	51-60 years	24.00	-		
	Total	22.53	2.34		
Psychological	20-30 years	16.14	2.19	1.778	.151 P>0.05 (NS)
	31-40 years	16.82	2.60		
	41-50 years	17.08	1.50		
	51-60 years	17.00	-		
	Total	16.29	2.24		
Spiritual	20-30 years	12.81	2.14	1.947	.122 P>0.05 (NS)
	31-40 years	13.11	1.87		
	41-50 years	14.15	1.63		
	51-60 years	14.00	-		
	Total	12.92	2.09		

INTERPRETATION: -

Table I: - indicates that the variables of diagnosis-health functioning and social support are significant, whereas, the other variables of family, psychological, spiritual are insignificant, to the age of the principal care-givers of children suffering from AIDS.

TABLE: II
SOCIO-DEMOGRAPHIC DATA SHOWING THE MEAN AND STANDARD
DEVIATION OF VARIOUS VARIABLES INCLUDED IN THE STUDY IN RELATION
TO THE MARITAL STATUS OF THE PRINCIPAL CARE-GIVERS OF CHILDREN
SUFFERING FROM AIDS

n-300

Variables	Marital status	Mean	Std. Deviations	F-Test	Significance
Diagnosis-Health Functioning	Married	29.80	2.43	1.200	.310
	Living together	29.17	2.10		(NS)
	Single	30.29	2.06		
	Separated	33.00	-		
	Total	29.77	2.40		P>0.05
Social support	Married	13.81	1.94	.096	.962
	Living together	13.74	2.53		(NS)
	Single	13.57	.53		
	Separated	13.00	-		
	Total	13.80	1.96		P>0.05
Family	Married	22.55	2.35	1.247	.293
	Living together	22.78	1.93		(NS)
	Single	21.00	2.94		
	Separated	21.00	-		
	Total	22.53	2.34		P>0.05
Psychological	Married	16.29	2.17	2.885	.036
	Living together	15.61	1.73		(S)
	Single	18.43	4.76		
	Separated	16.00	-		
	Total	16.29	2.24		P<0.05
Spiritual	Married	13.00	2.01	2.599	.052
	Living together	12.13	2.94		(S)
	Single	11.86	.69		
	Separated	16.00	-		
	Total	12.92	2.09		P<0.05

INTERPRETATION:

Table II: indicates that the marital status of the principal care-givers of children suffering from AIDS in relation to the variables of psychological and spiritual are significant. The variables of diagnosis-health functioning, social support and family are insignificant.

TABLE III
SOCIO-DEMOGRAPHIC DATA SHOWING THE MEAN AND STANDARD
DEVIATION OF VARIOUS VARIABLES INCLUDED IN THE STUDY IN RELATION
TO THE TYPE OF FAMILY OF THE PRINCIPAL CARE-GIVERS OF CHILDREN
SUFFERING FROM AIDS

n-300

Variables	Type of family	Mean	Std. Deviation.	F-Test	Significance
Diagnosis-Health Functioning	Joint	29.85	2.41	1.249	.288 (NS) P>0.05
	Nuclear	29.13	2.29		
	Living alone	29.00	-		
	Total	29.77	2.40		
Social support	Joint	13.82	1.96	.171	.843 (NS) P>0.05
	Nuclear	13.60	1.98		
	Living alone	14.00	-		
	Total	13.80	1.96		
Family	Joint	22.73	2.25	11.082	.000 (S) P<0.001
	Nuclear	20.70	2.35		
	Living alone	24.00	-		
	Total	22.53	2.34		
Psychological	Joint	16.26	2.03	.160	.852 (NS) P>0.05
	Nuclear	16.47	3.72		
	Living alone	17.00	-		
	Total	16.29	2.24		
Spiritual	Joint	12.90	2.11	.124	.884 (NS) P>0.05
	Nuclear	13.10	2.01		
	Living alone	13.00	-		
	Total	12.92	2.09		

INTERPRETATION:

Table III: - Indicates that the ‘family’ component of the principal care-givers suffering from AIDS is significant. Other variables such as diagnosis-health functioning, social support, psychological, spiritual, are all insignificant. This interpretation reveals the significance of the ‘family’ its structures /types as an important social institution.

TABLE IV

**SOCIO-DEMOGRAPHIC DATA SHOWING THE MEAN AND STANDARD
DEVIATION OF VARIOUS VARIABLES INCLUDED IN THE STUDY IN RELATION
TO THE RELIGION OF THE PRINCIPAL CARE-GIVERS OF CHILDREN
SUFFERING FROM AIDS**

n-300

Variables	Religion	Mean	Std. Deviation	F. Test	Significance
Diagnosis-Health Functioning	Hindu	29.98	2.35	9.419	.000 (S) P<0.001
	Christian	28.38	2.23		
	Muslim	32.00	1.41		
	Total	29.77	2.40		
Social support	Hindu	13.84	2.05	1.976	.140 (NS) P>0.05
	Christian	13.45	1.23		
	Muslim	16.00	1.41		
	Total	13.80	1.96		
Family	Hindu	22.88	2.22	25.396	.000 (S) P<0.001
	Christian	20.33	1.83		
	Muslim	24.00	00		
	Total	22.53	2.34		
Psychological	Hindu	15.82	1.58	50.405	.000 (S) P<0.001
	Christian	19.07	3.45		
	Muslim	17.00	00		
	Total	16.29	2.24		
Spiritual	Hindu	12.92	2.14	2.305	.102 (NS) P>0.05
	Christian	12.76	1.72		
	Muslim	16.00	1.41		
	Total	12.92	2.09		

INTERPRETATION:

Table IV: - indicates that diagnosis-health functioning, family and psychological variables are significant. The other variables of social support and spiritual are insignificant. The findings reveal that religion has its role to play in the diagnosis of the illness of the principal care-givers, which has an effect on the members of the family and their psychological distress.

TABLE V

**SOCIO-DEMOGRAPHIC DATA SHOWING THE MEAN AND STANDARD
DEVIATION OF VARIOUS VARIABLES INCLUDED IN INCOME OF THE
PRINCIPAL THE STUDY IN RELATIOTO THE
CARE-GIVERS OF CHILDREN SUFFERING FROM AIDS**

n-300

Variables	House –Hold Income	Mean	Std. Deviation	‘t’	Significance
Diagnosis - Health Functioning	Rs. 1000-3000	29.80	2.41	1.022	.308 (NS) P>0.05
	Rs. 3000-6000	28.86	1.77		
Social support	Rs. 1000-3000	13.83	1.95	2.075	.039 (S) P<0.05
	Rs. 3000-6000	12.29	1.80		
Family	Rs. 1000-3000	22.53	2.34	.047	.962 (NS) P>0.05
	Rs. 3000-6000	22.57	2.23		
Psychological	Rs. 1000-3000	16.30	2.23	.853	.394 (NS) P>0.05
	Rs. 3000-6000	15.57	2.82		
Spiritual	Rs. 1000-3000	12.95	2.08	1.546	.123 (NS) P>0.05
	Rs. 3000-6000	11.71	2.63		

INTERPRETATION: -

Table V: - indicates that the variable of social support is significant and all other variables of diagnosis health-functioning, family, psychological, spiritual are insignificant.

TABLE VI

**SOCIO-DEMOGRAPHIC DATA SHOWING THE MEAN AND STANDARD
DEVIATION OF VARIOUS VARIABLES INCLUDED IN
THE STUDY IN RELATION TO THE SEX OF THE
PRINCIPAL CARE-GIVERS OF CHILDREN SUFFERING FROM AIDS**

n-300

Variables	Sex of The P.C.G's.	Mean	Std. Deviation	't'. test	Significance
Diagnosis Health Functioning	Male	30.19	1.91	.709	0.479 (NS) P>0.05
	Female	29.75	2.43		
Social support	Male	14.25	1.95	.951	.343 (NS) P>0.05
	Female	13.77	1.96		
Family	Male	23.75	2.29	2.161	.032 (S) P<0.05
	Female	22.46	2.32		
Psychological	Male	15.94	1.39	.639	.523 (NS) P>0.05
	Female	16.31	2.28		
Spiritual	Male	13.06	1.34	.279	.780 (NS) P>0.05
	Female	12.91	2.13		

INTERPRETATION: -

Table VI: - Indicates that the family component is significant and other variables of diagnosis health-functioning, social support, psychological, spiritual are insignificant. The male and female principal care-givers are the important members to form the unit of a 'family'.

TABLE VII
SOCIO-DEMOGRAPHIC DATA SHOWING THE MEAN AND STANDARD
DEVIATION OF VARIOUS VARIABLES INCLUDED IN THE STUDY IN RELATION
TO THE EMPLOYMENT STATUS OF THE PRINCIPAL CARE-GIVERS OF
CHILDREN SUFFERING FROM AIDS n-300

Variables	Employment status	Mean	Std. Deviation	'F'	Significance
Diagnosis health functioning	Coolie	29.80	2.41	.178	.950 (NS) P>0.05
	Office	30.00	2.25		
	Self employed	29.35	2.12		
	Business	29.50	.71		
	School/college	30.00	-		
	Total	29.78	2.37		
Social Support	Coolie	13.89	2.03	1.289	.275 (NS) P>0.05
	Office	12.93	2.23		
	Self employed	13.71	1.31		
	Business	12.50	.71		
	School/college	16.00	-		
	Total	13.82	2.00		
Family	Coolie	22.47	2.31	.275	.894 (NS) P>0.05
	Office	23.07	1.27		
	Self employed	22.59	2.24		
	School/college	23.00	1.41		
	Total	22.00	-		
		22.51	2.24		
Psychological	Coolie	16.22	2.33	.127	.973 (NS) P>0.05
	Office	16.50	1.22		
	Self employed	16.06	2.25		
	Business	15.50	.71		
	School/college	16.00	-		
	Total	16.22	2.26		
Spiritual	Coolie	13.05	1.93	.703	.591 (NS) P>0.05
	Office	12.64	2.06		
	Self employed	13.00	2.40		
	Business	15.00	.00		
	School/college	14.00	-		
	Total	13.04	1.96		

INTERPRETATION: Table VII: - indicates that all the variables related to diagnosis health-functioning, social support, family, psychological, spiritual are all insignificant. Thus the employment status of the principal care-givers has no relationship to the above mentioned variables in regard to their illness (AIDS).

TABLE VIII

**SOCIO-DEMOGRAPHIC DATA SHOWING THE MEAN AND STANDARD
DEVIATION OF VARIOUS VARIABLES INCLUDED IN THE STUDY IN RELATION
TO THE EMPLOYMENT STATUS OF THE PRINCIPAL CARE-GIVERS OF
CHILDREN SUFFERING FROM AIDS**

n-300

Variables	Employment status of the care-givers	Mean	Std. Deviation.	't'	Significance
Diagnosis Health functioning	Employed	29.76	2.34	.204	.839 (NS) P>0.05
	Unemployed	29.83	2.65		
Social Support	Employed	13.80	1.99	.074	.941 (NS) P>0.05
	Unemployed	13.78	1.84		
Family	Employed	22.49	2.23	.605	.546 (NS) P>0.05
	Unemployed	22.69	2.76		
Psychological	Employed	16.22	2.27	1.107	.269 (NS) P>0.05
	Unemployed	16.58	2.11		
Spiritual	Employed	13.02	1.96	1.760	.079 (NS) P>0.05
	Unemployed	12.49	2.56		

INTERPRETATION: -

Table VIII: - Indicates that all the variables related to Diagnosis Health-Functioning, Social Support, Family, Psychological, and Spiritual are insignificant. Thus these variables do not have any relationship to the employment status of the principal care-givers and their illness (AIDS).

TABLE IX

**SOCIO-DEMOGRAPHIC DATA SHOWING THE MEAN AND STANDARD
DEVIATION OF VARIOUS VARIABLES INCLUDED IN THE STUDY IN RELATION
TO THE EDUCATIONAL STATUS OF THE PRINCIPAL CARE-GIVERS OF
CHILDREN SUFFERING FROM AIDS**

n-300

Variables	Educational status of the P.C.G's	Mean	Std Deviation	'F'	Significance
Health Diagnosis Functioning	Primary School	29.71	2.28	.120	.948 (NS) P>0.05
	Secondary School	29.60	2.58		
	Higher Education	29.00	1.41		
	College Education	29.00	-		
	Total	29.61	2.43		
Social Support	Primary School	13.88	1.87	.487	.692 (NS) P>0.05
	Secondary School	13.84	1.78		
	Higher Education	12.75	1.71		
	College Education	14.00	-		
	Total	13.81	1.79		
Family	Primary School	23.12	1.90	.685	.563 (NS) P>0.05
	Secondary School	22.40	2.94		
	Higher Education	22.25	2.22		
	College Education	24.00	-		
	Total	22.64	2.62		
Psychological	Primary School	16.29	1.96	.761	.518 (NS) P>0.05
	Secondary School	16.79	2.59		
	Higher Education	15.25	2.36		
	College Education	17.00	-		
	Total	16.58	2.39		
Spiritual	Primary School	12.88	2.73	2.007	.118 (NS) P>0.05
	Secondary School	13.13	2.21		
	Higher Education	11.50	3.32		
	College Education	8.00	-		
	Total	12.94	2.46		

INTERPRETATION: -

Table IX: - Indicates the variables of Diagnosis Health-Functioning, Social Support, Family, Psychological, and Spiritual are all insignificant. Thus the educational status of the principal care-givers has no significant effect on their illness (AIDS.)

TABLE X

**SOCIO-DEMOGRAPHIC DATA SHOWING THE MEAN AND STANDARD
DEVIATION OF VARIOUS VARIABLES INCLUDED IN THE STUDY IN RELATION
TO THE EDUCATIONAL STATUS OF THE PRINCIPAL CARE-GIVERS OF
CHILDREN SUFFERING FROM AIDS**

n-300

Variables	Educational status PCG'S	Mean	Std. Deviation	't'	Significance
Diagnosis Health Functioning	Literate	29.55	2.34	1.193	.234
	Illiterate	29.90	2.43		NS P>0.05
Social Support	Literate	13.79	1.77	.076	.939
	Illiterate	13.80	2.06		NS P>0.05
Family	Literate	22.62	2.61	.479	.632
	Illiterate	22.48	2.17		NS P>0.05
Psychological	Literate	16.54	2.40	1.471	.142
	Illiterate	16.15	2.15		NS P>0.05
Spiritual	Literate	12.92	2.51	.025	.980
	Illiterate	12.92	1.83		NS P>0.05

INTERPRETATION: -

Table X: - Indicates that all the variables related to Diagnosis Health-Functioning, Social Support, Family, Psychological, and Spiritual are insignificant. Thus these variables do not have any relationship to the educational status of the principal care-givers and their illness (AIDS).

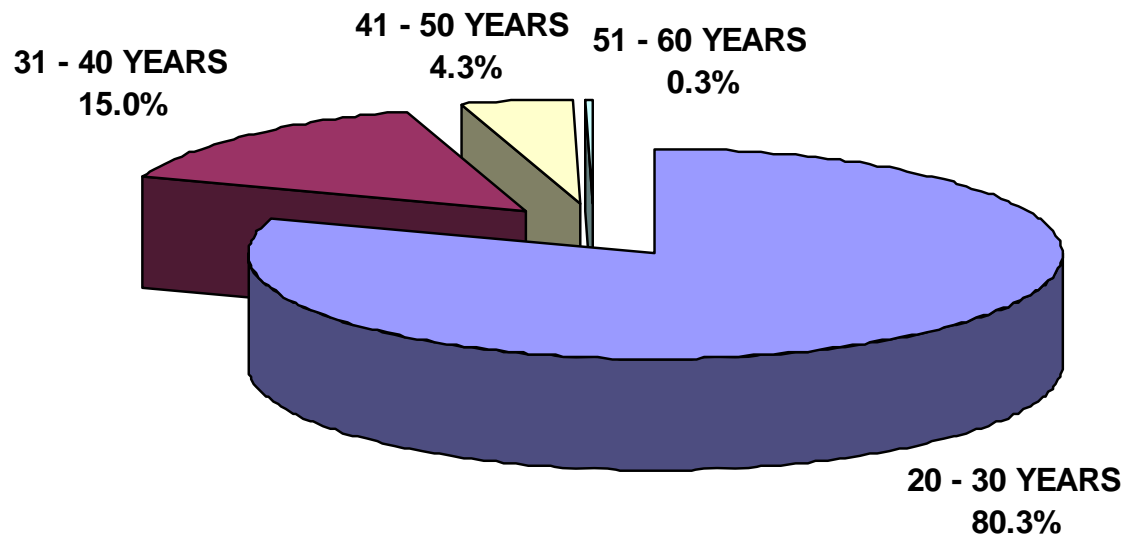
TABLE XI
SOCIO-DEMOGRAPHIC DATA SHOWING THE MEAN AND STANDARD
DEVIATION OF VARIOUS VARIABLES INCLUDED IN THE STUDY IN RELATION
TO THE RESIDENCE OF THE PRINCIPAL CARE-GIVERS OF CHILDREN
SUFFERING FROM AIDS

n-300					
Variables	Residence	Mean	Std. deviation	'f'	Significance
Diagnosis- Health Functioning	Urban	29.86	2.32	.442	.643 (NS) P>0.05
	Rural	29.60	2.56		
	Sub urban	29.00	-		
	Total	29.77	2.40		
Social support	Urban	13.84	1.97	.176	.839 (NS) P>0.05
	Rural	13.70	1.95		
	Sub urban	14.00	-		
	Total	13.80	1.96		
Family	Urban	22.67	2.43	1.549	.214 (NS) P>0.05
	Rural	22.28	2.12		
	Sub urban	20.00	-		
	Total	22.53	2.34		
Psychological	Urban	16.28	2.08	.174	.840 (NS) P>0.05
	Rural	16.32	2.56		
	Sub urban	15.00	-		
	Total	16.29	2.24		
Spiritual	Urban	12.83	2.19	.920	.400 (NS) P>0.05
	Rural	13.07	1.89		
	Sub urban	15.00	-		
	Total	12.92	2.09		

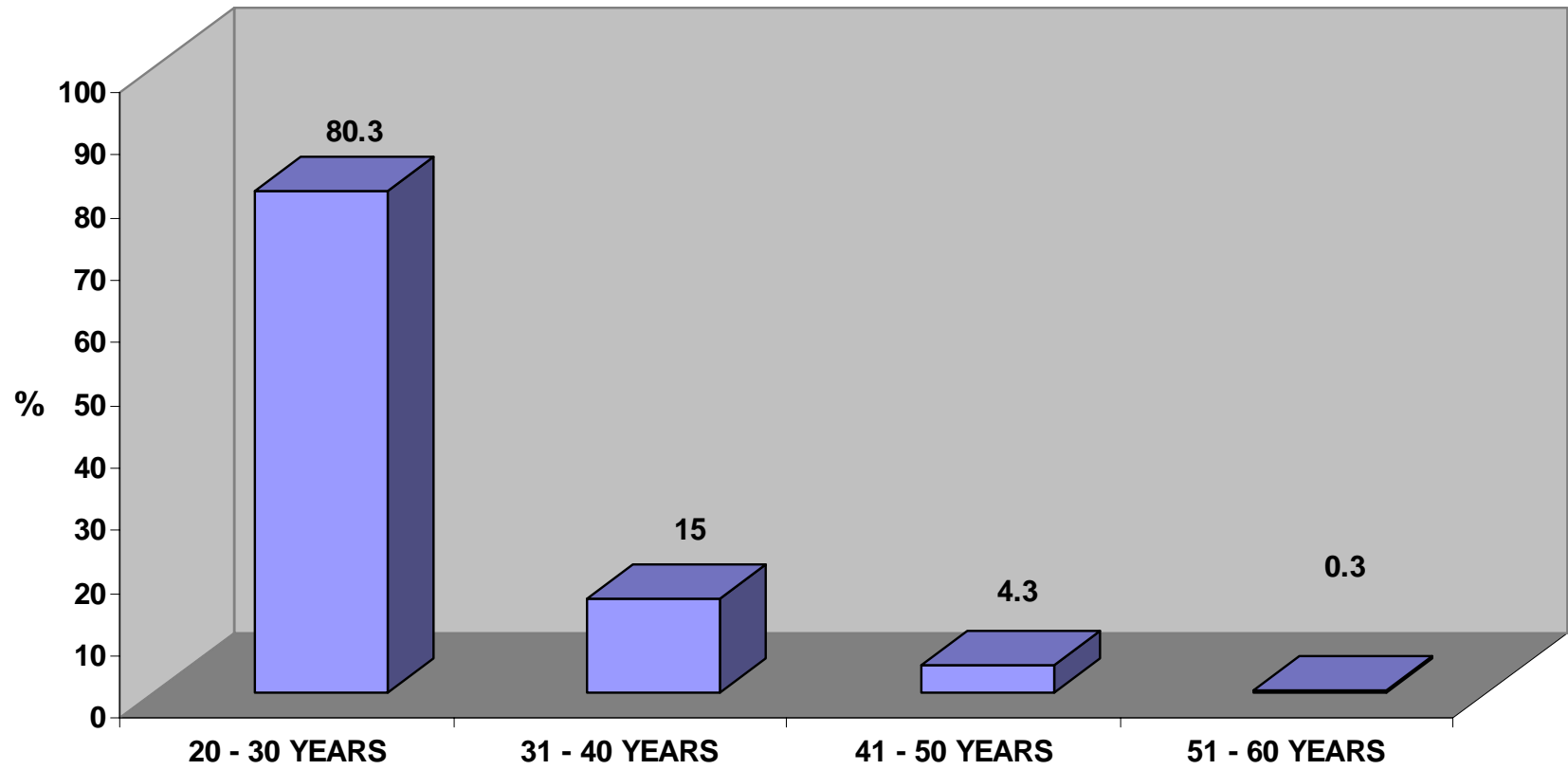
INTERPRETATION:

Table XI: - Indicates that the variables of diagnosis-health functioning, Social support, Psychological, Spiritual related to the residence of the principal care-givers of the children suffering from AIDS are all insignificant.

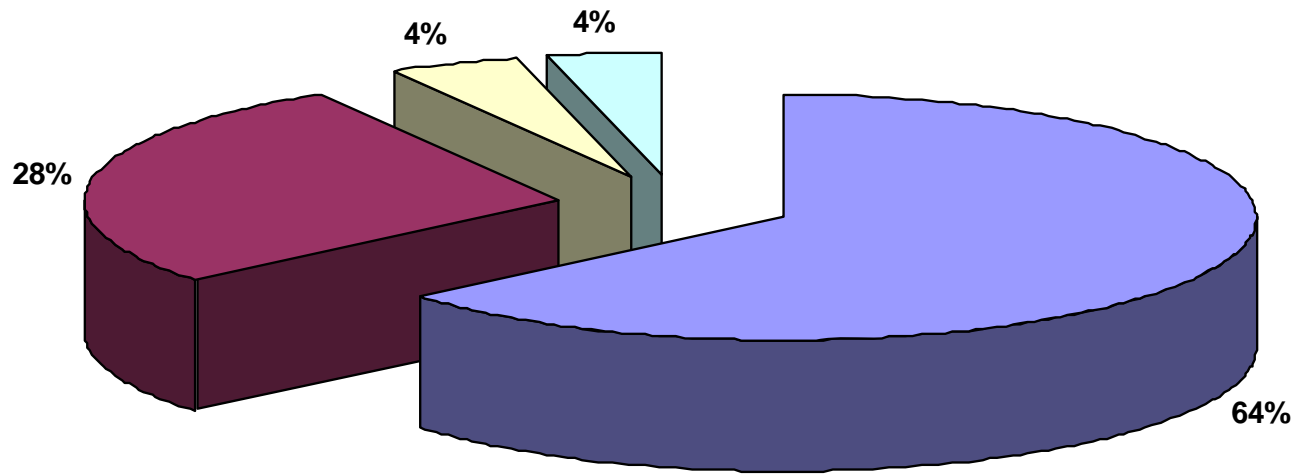
AGE OF THE MOTHER



AGE OF THE P.C.G'S

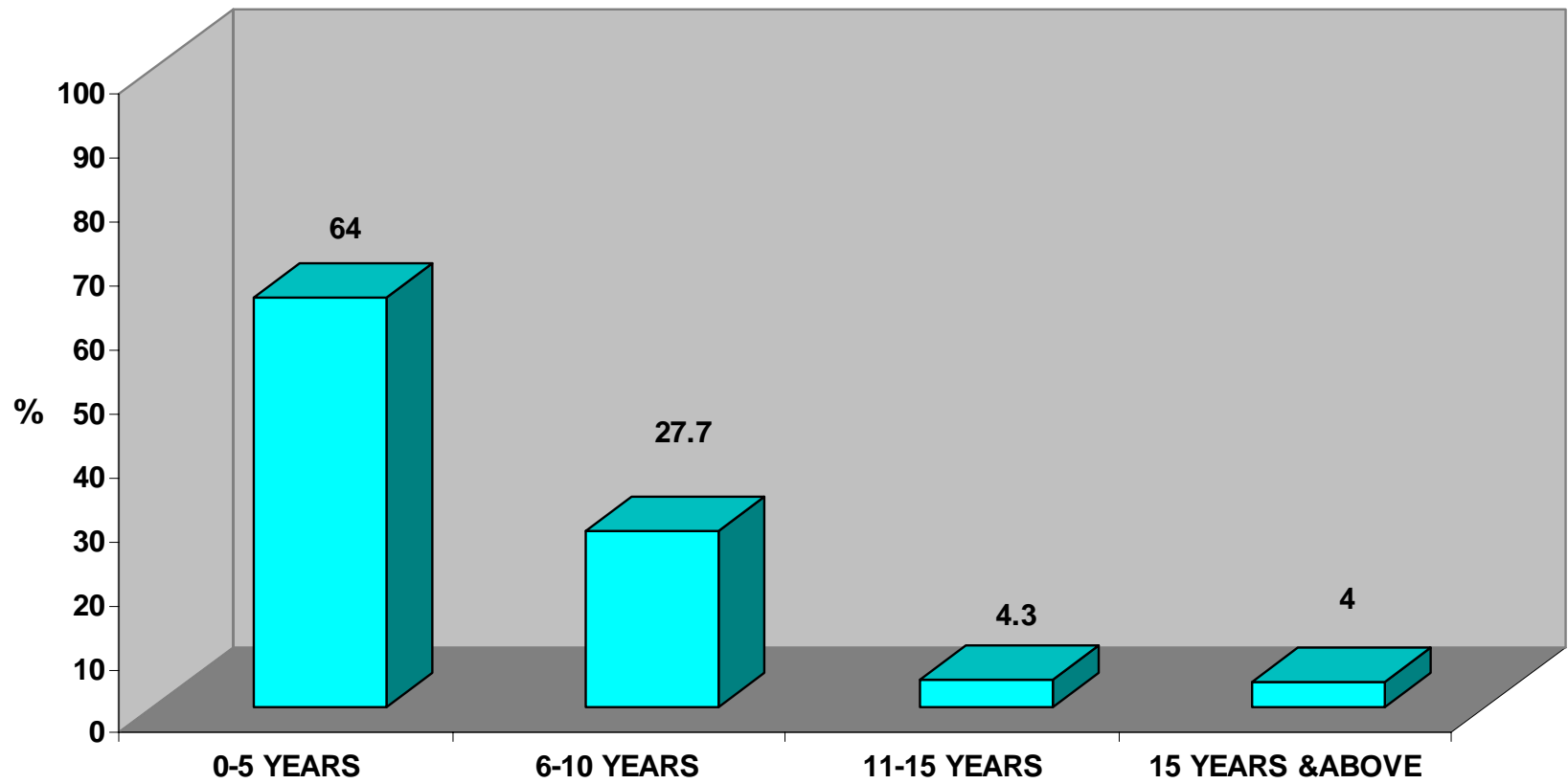


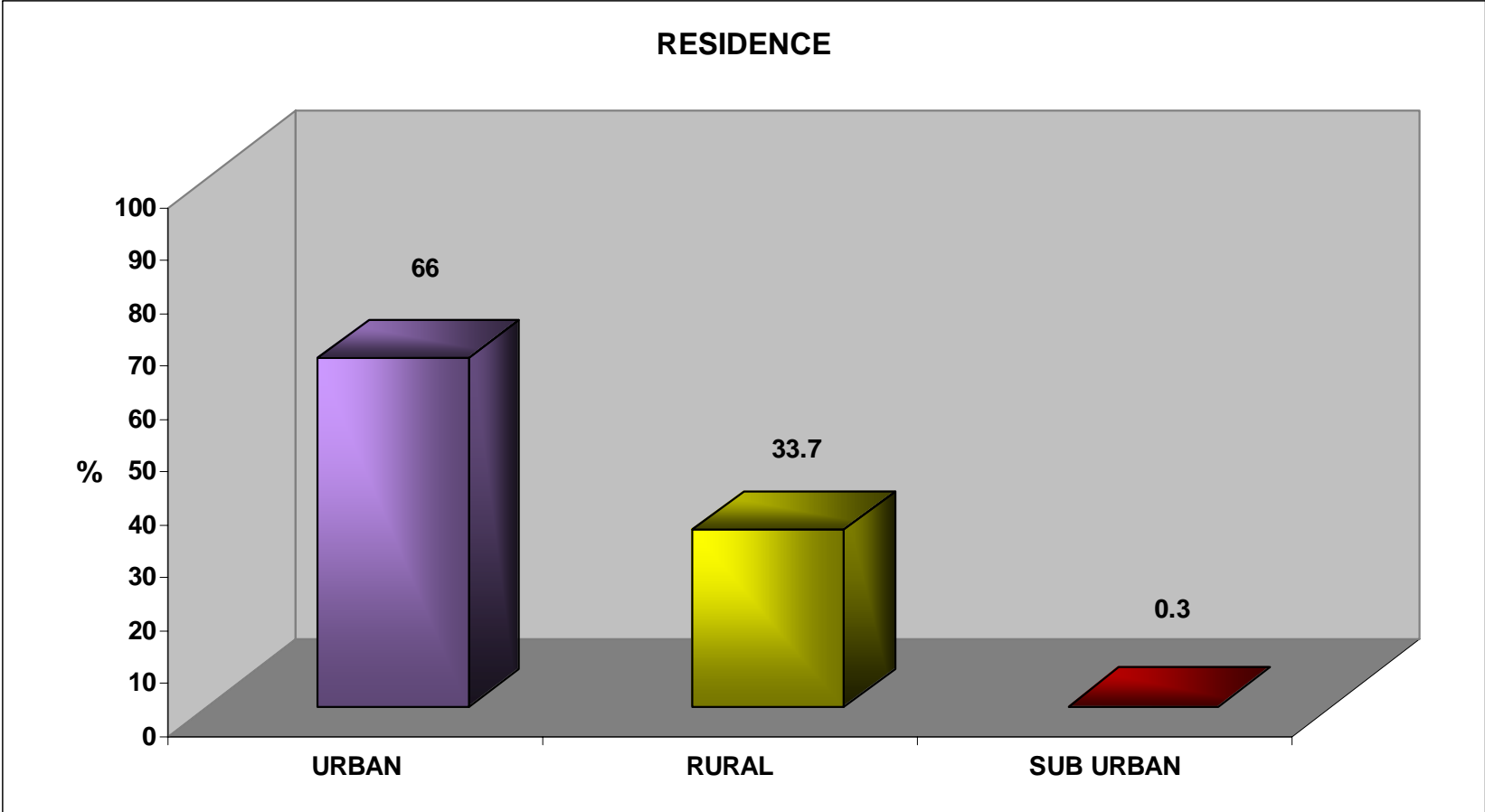
AGE OF THE CHILD



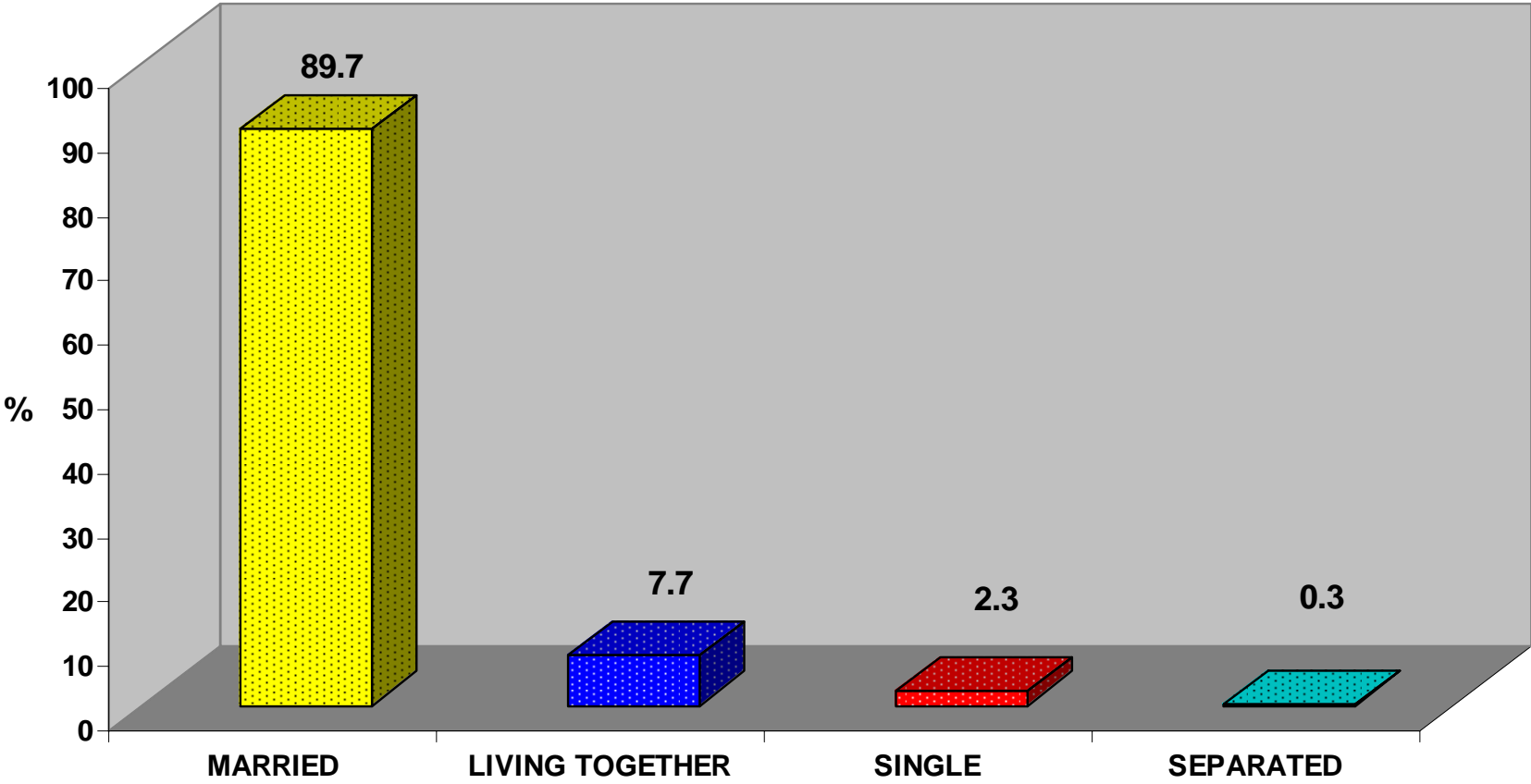
■ 0 - 5 YEARS ■ 6 - 10 YAERS ■ 11 - 15 YEARS ■ 15 YEARS & ABOVE

AGE OF THE CHILD

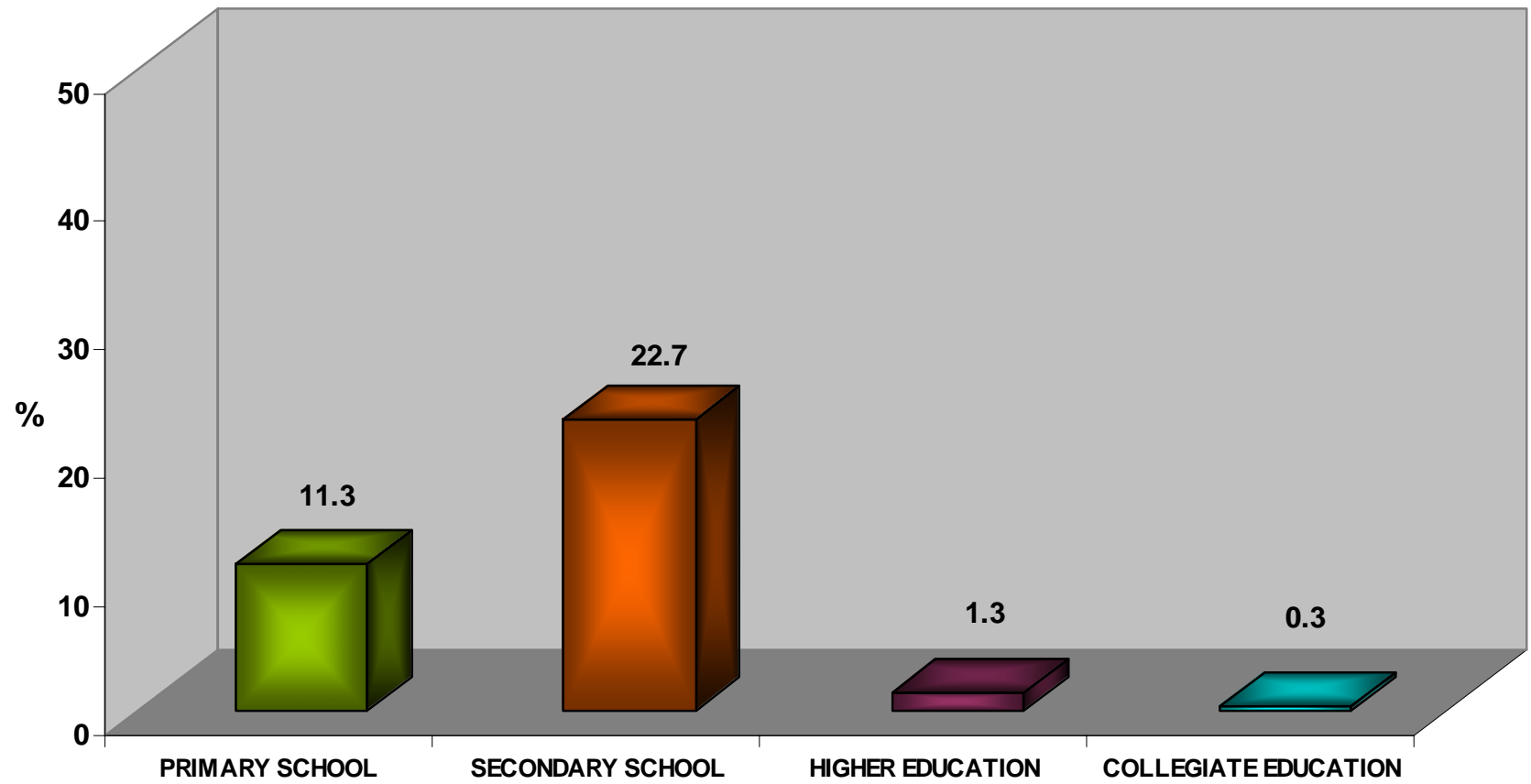




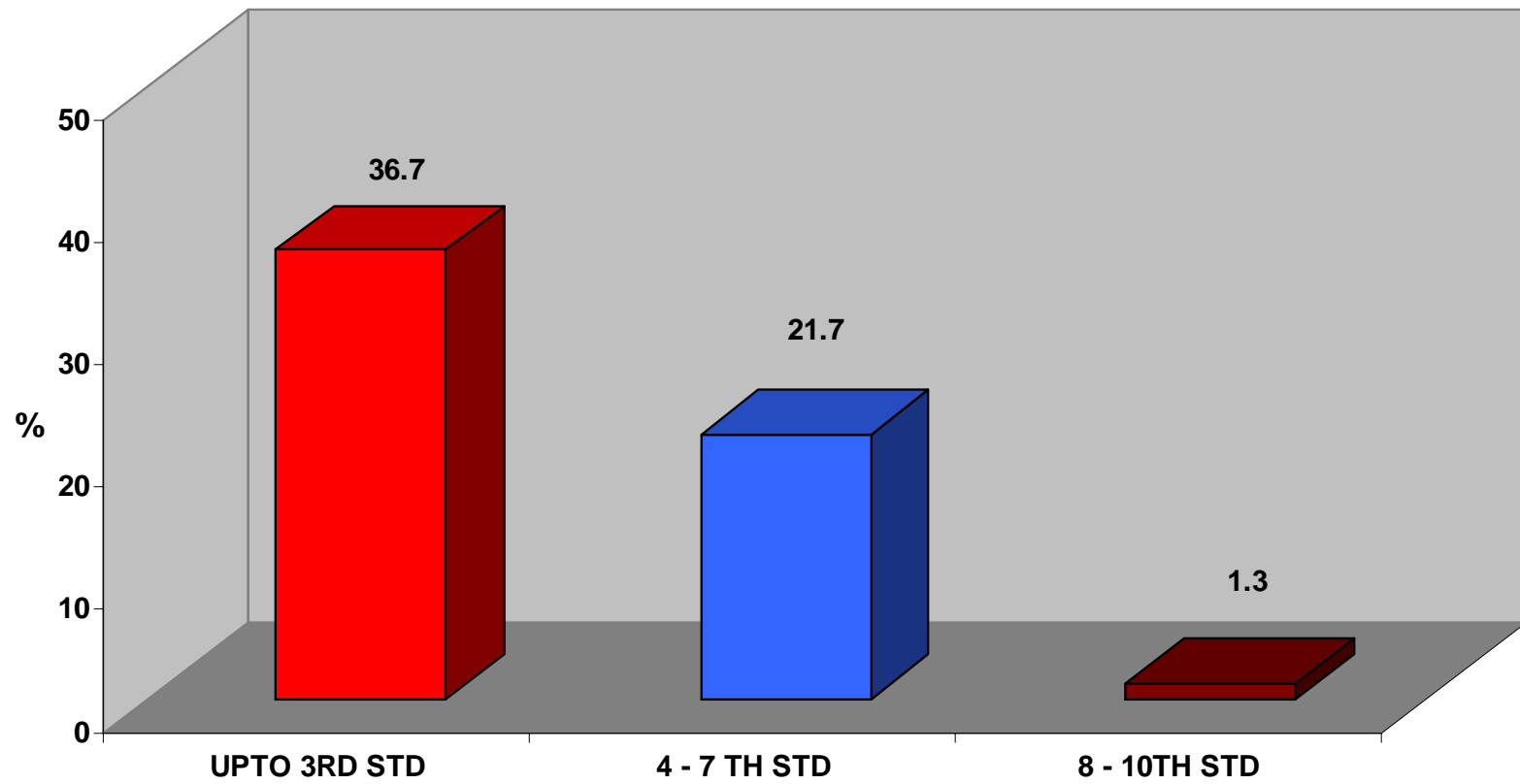
MARITAL STATUS



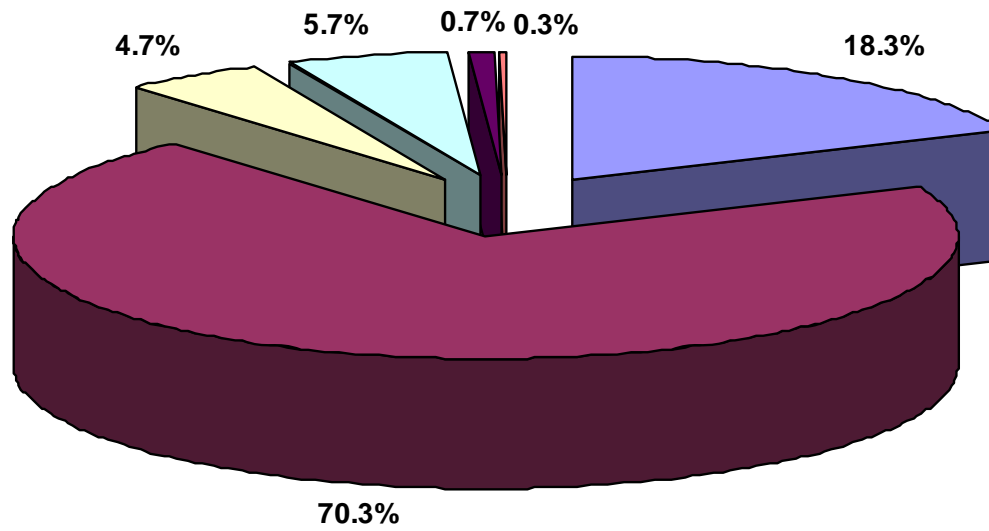
EDUCATION - LITERATE-P.C.G'S



EDUCATION - LITERATE - CHILD

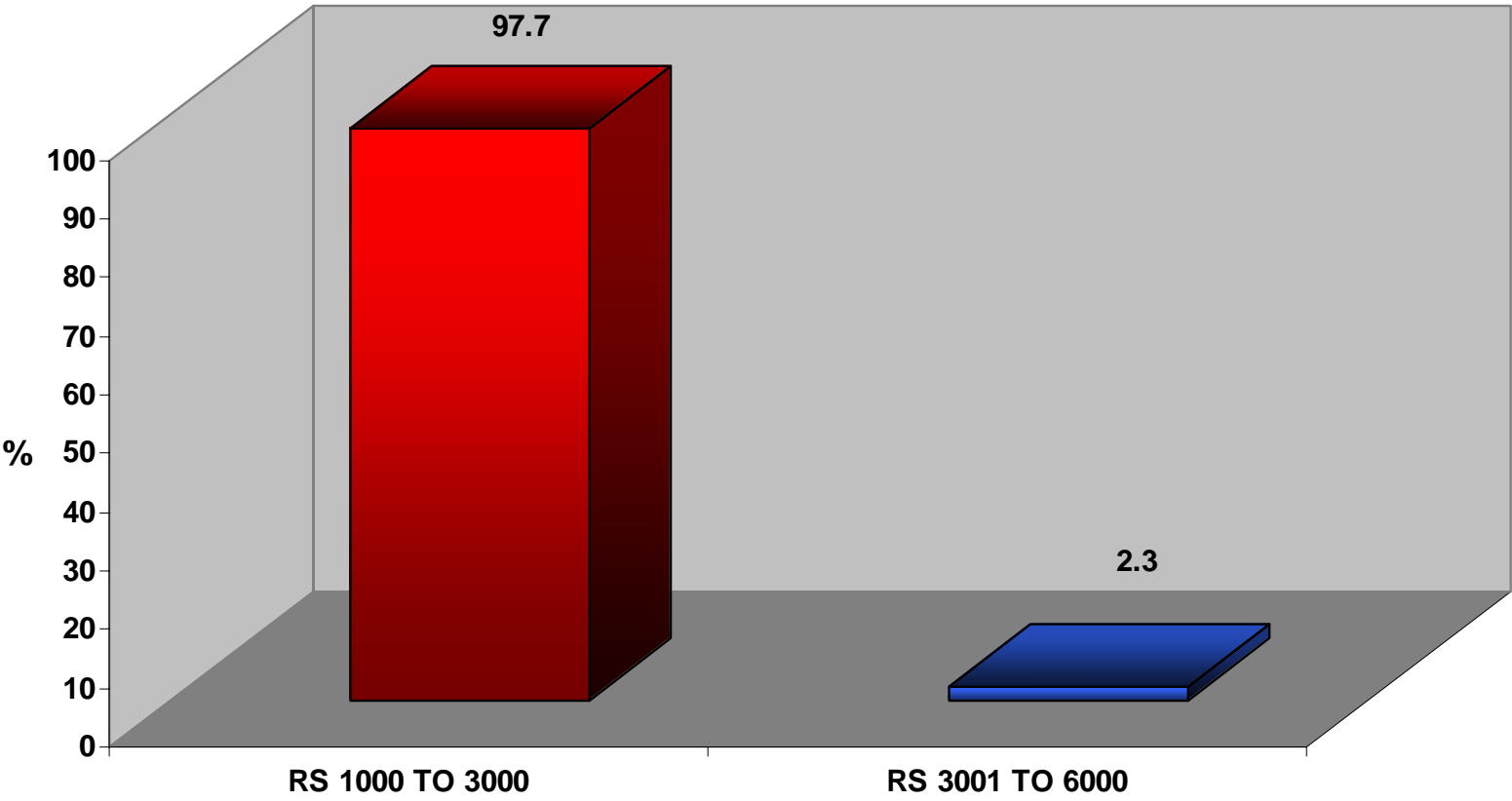


OCCUPATIONAL STATUS OF THE MOTHER

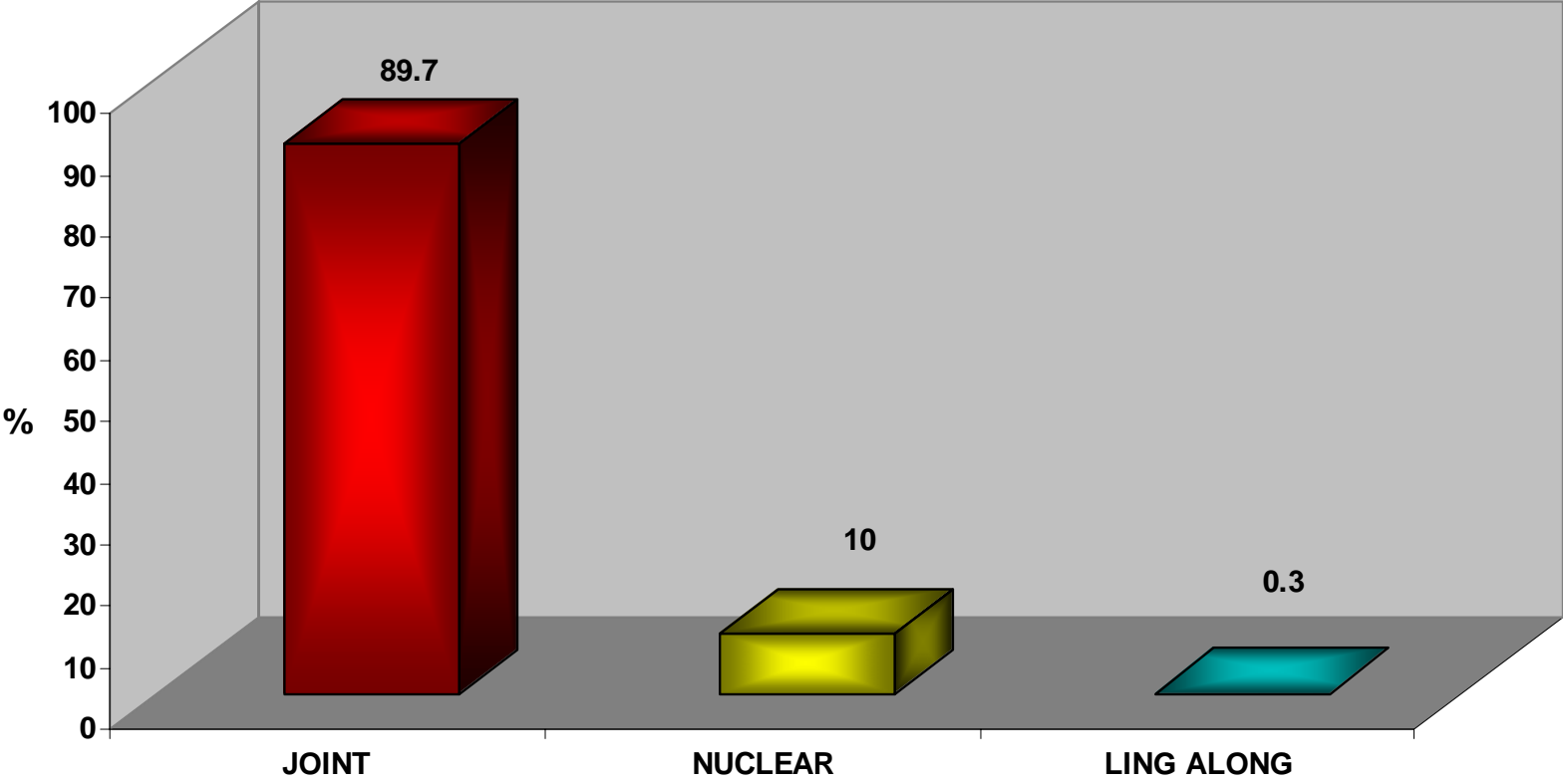


UNEMPLOYED COOLIE OFFICE SELF EMPLOYED BUSINESS SCHOOL / COLLEGE

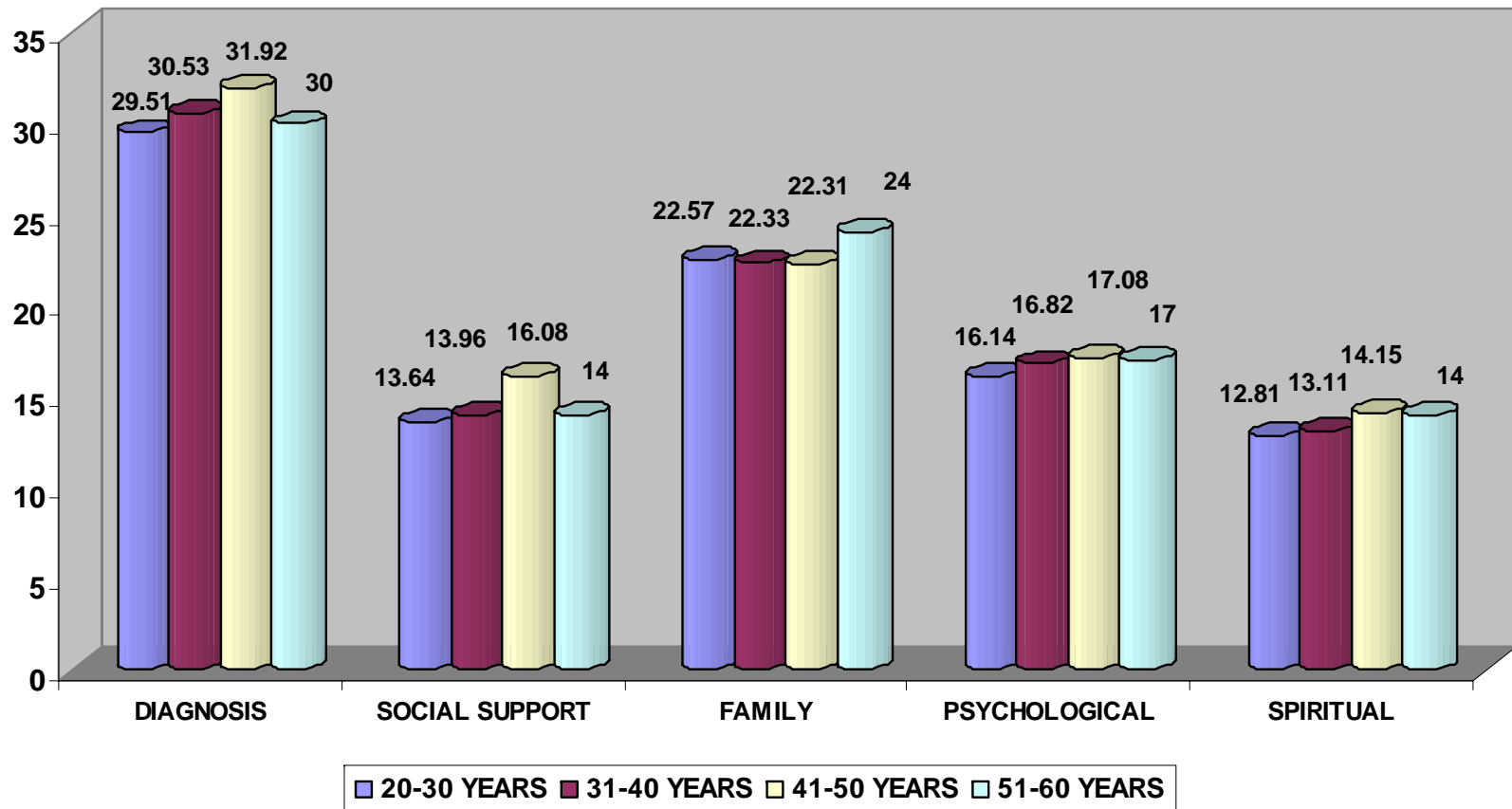
INCOME



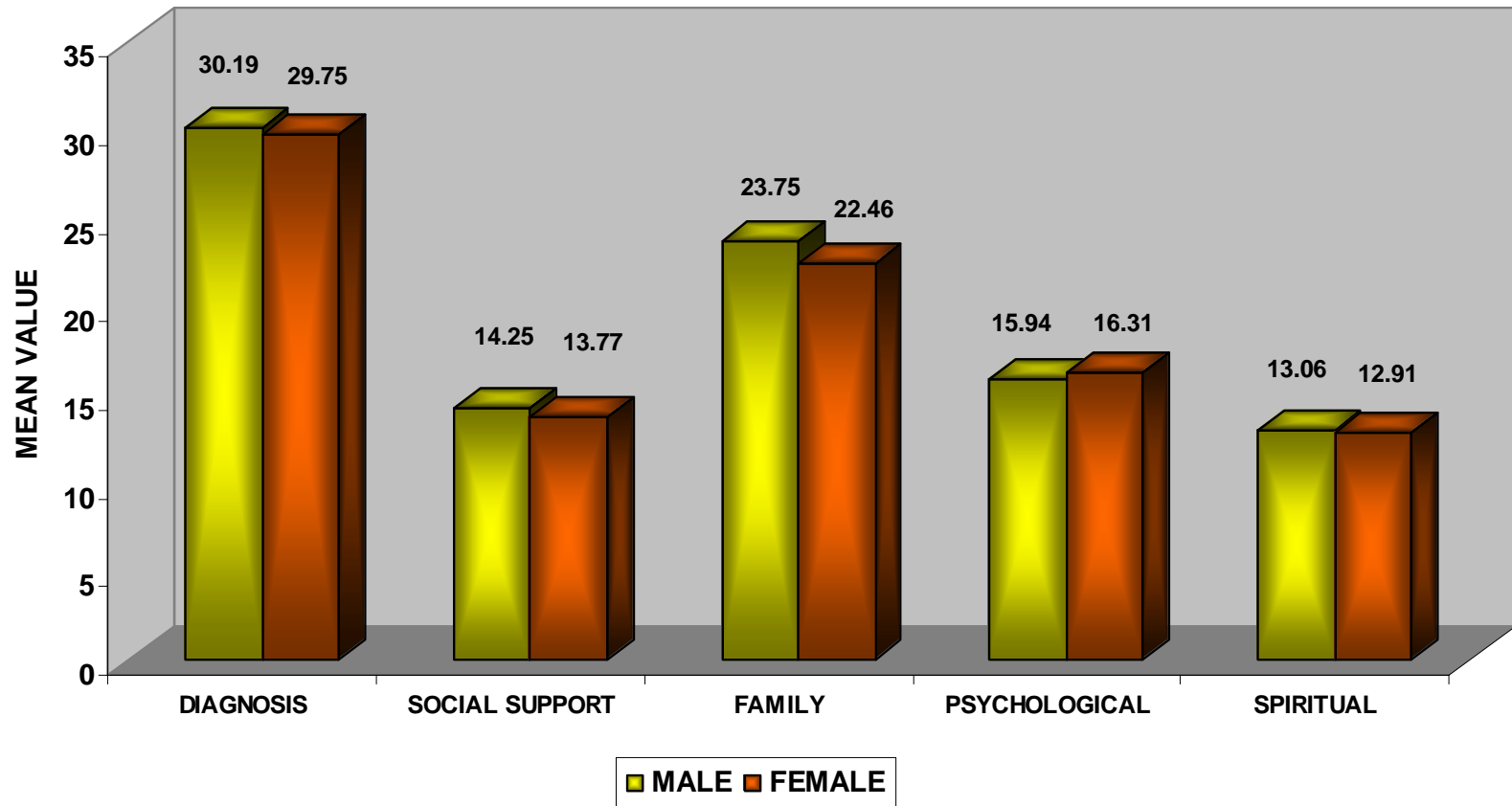
TYPE OF FAMILY



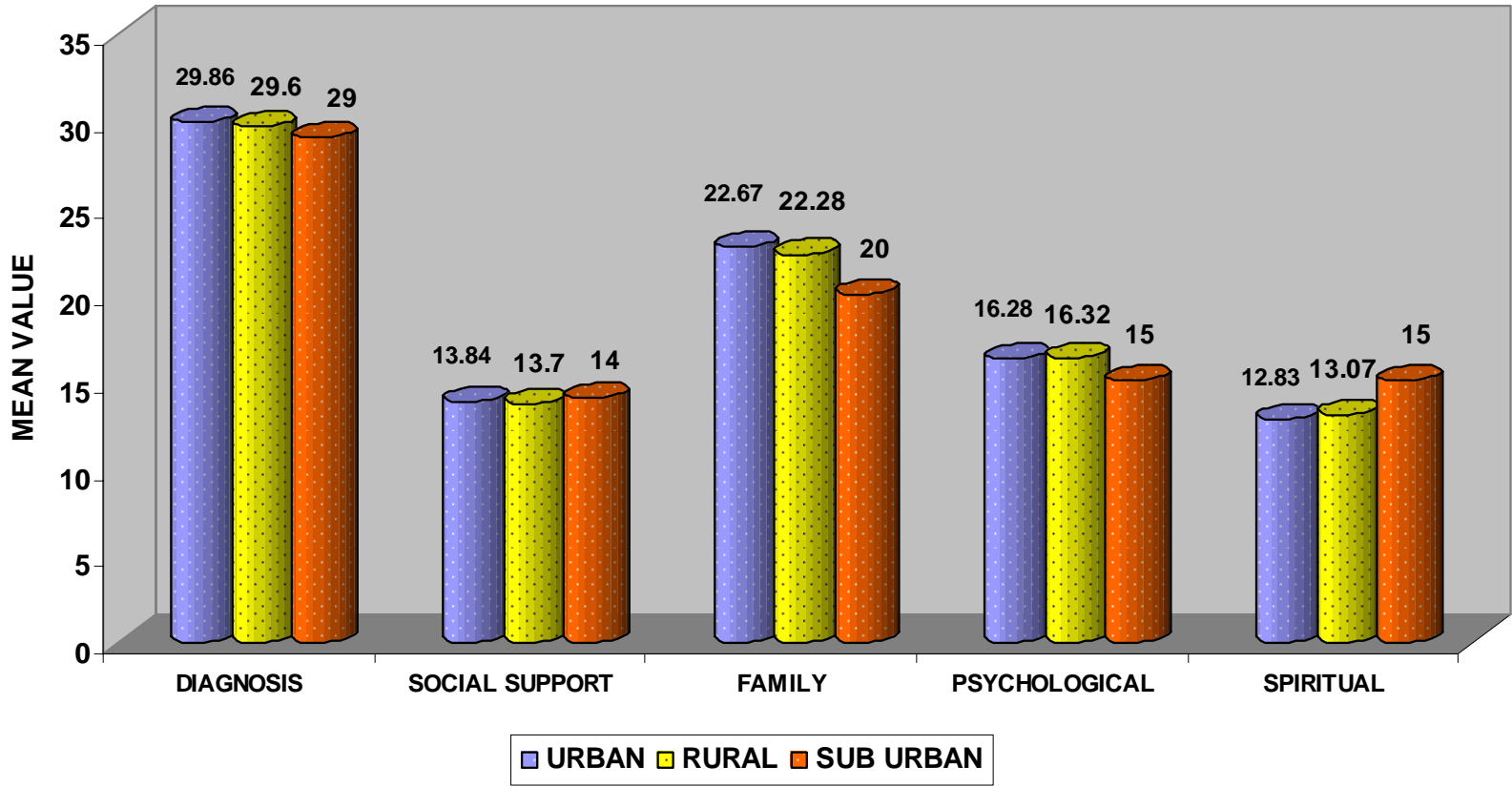
RELATION TO AGE



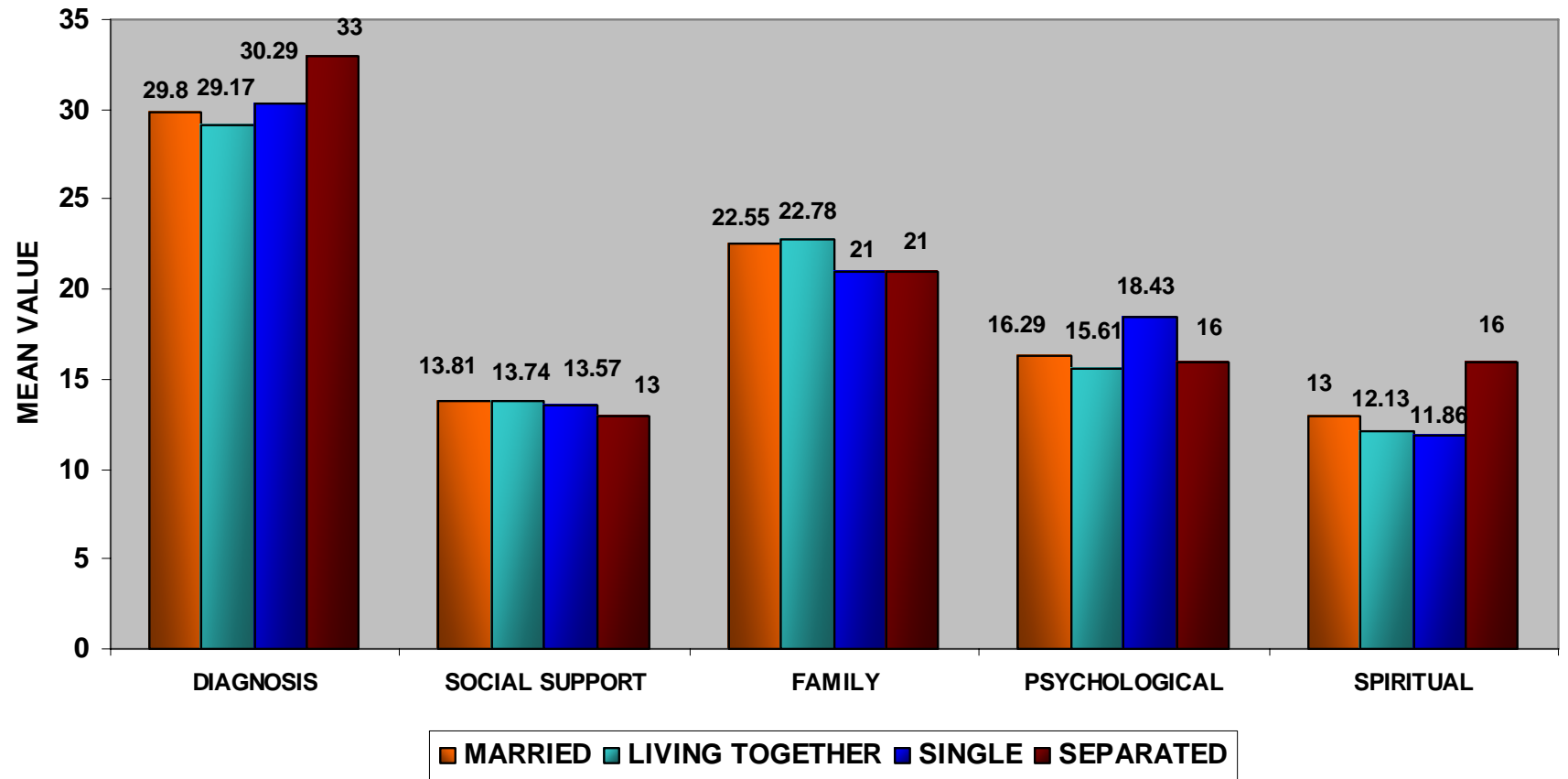
RELATION TO SEX



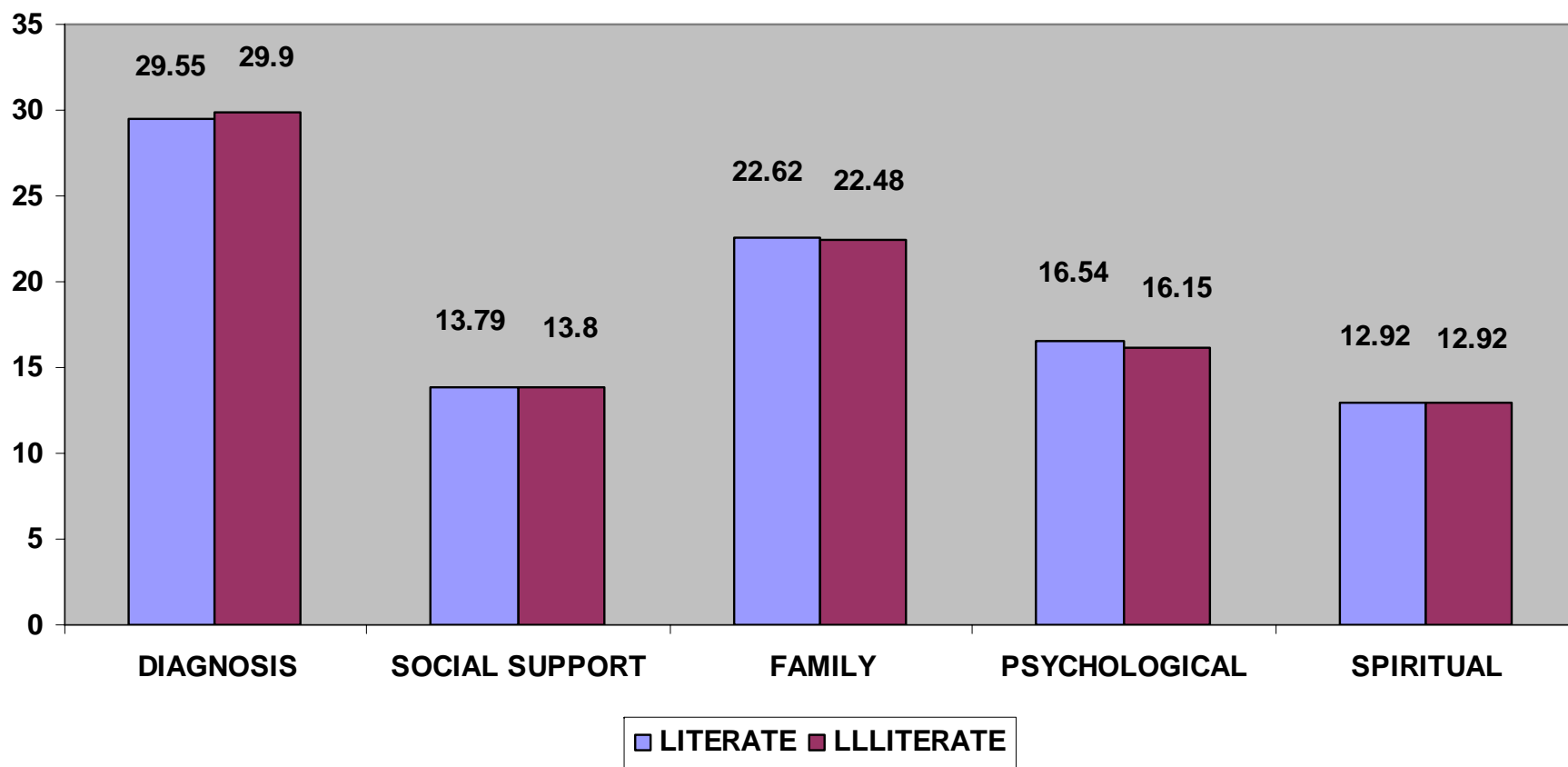
RELATION TO RESIDENCE



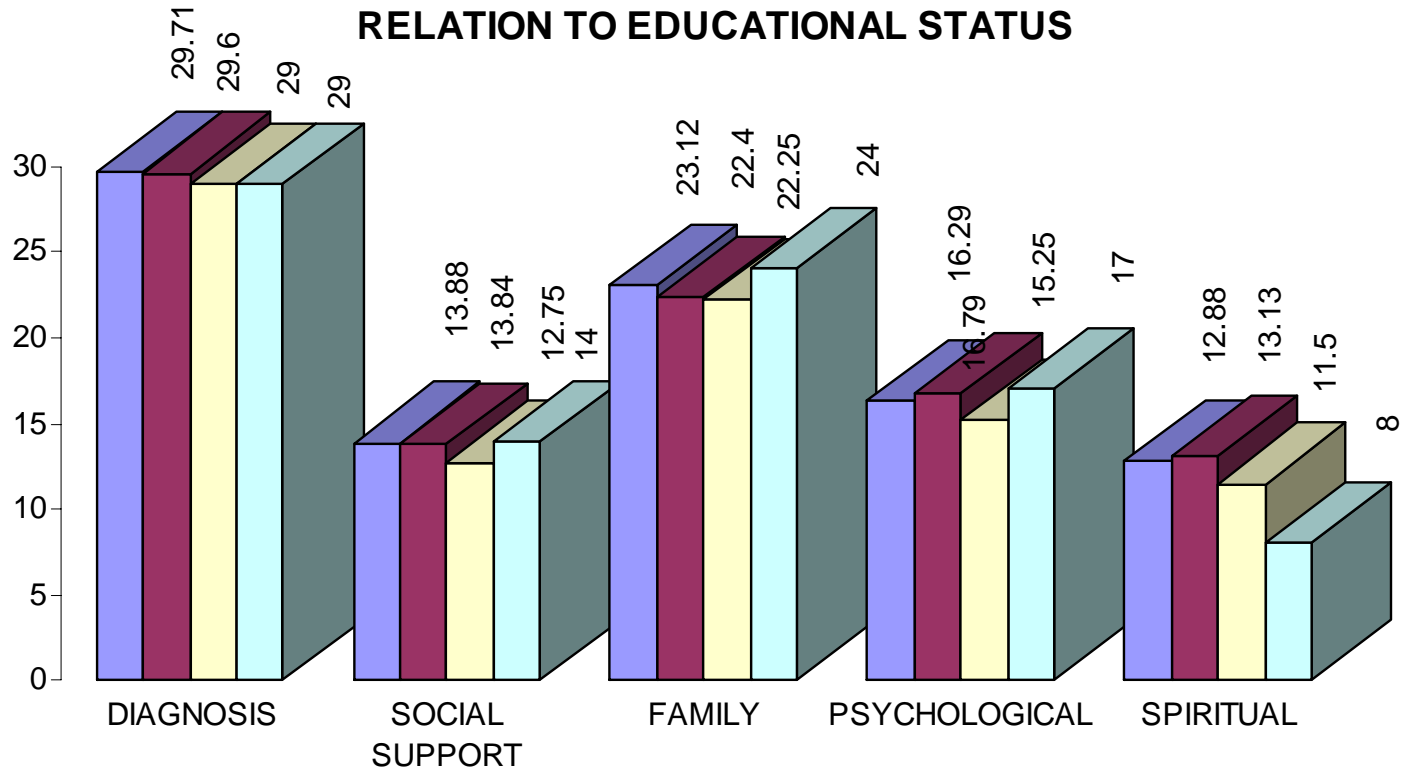
RELATION TO MARITAL STATUS



EDUCATIONAL LEVEL

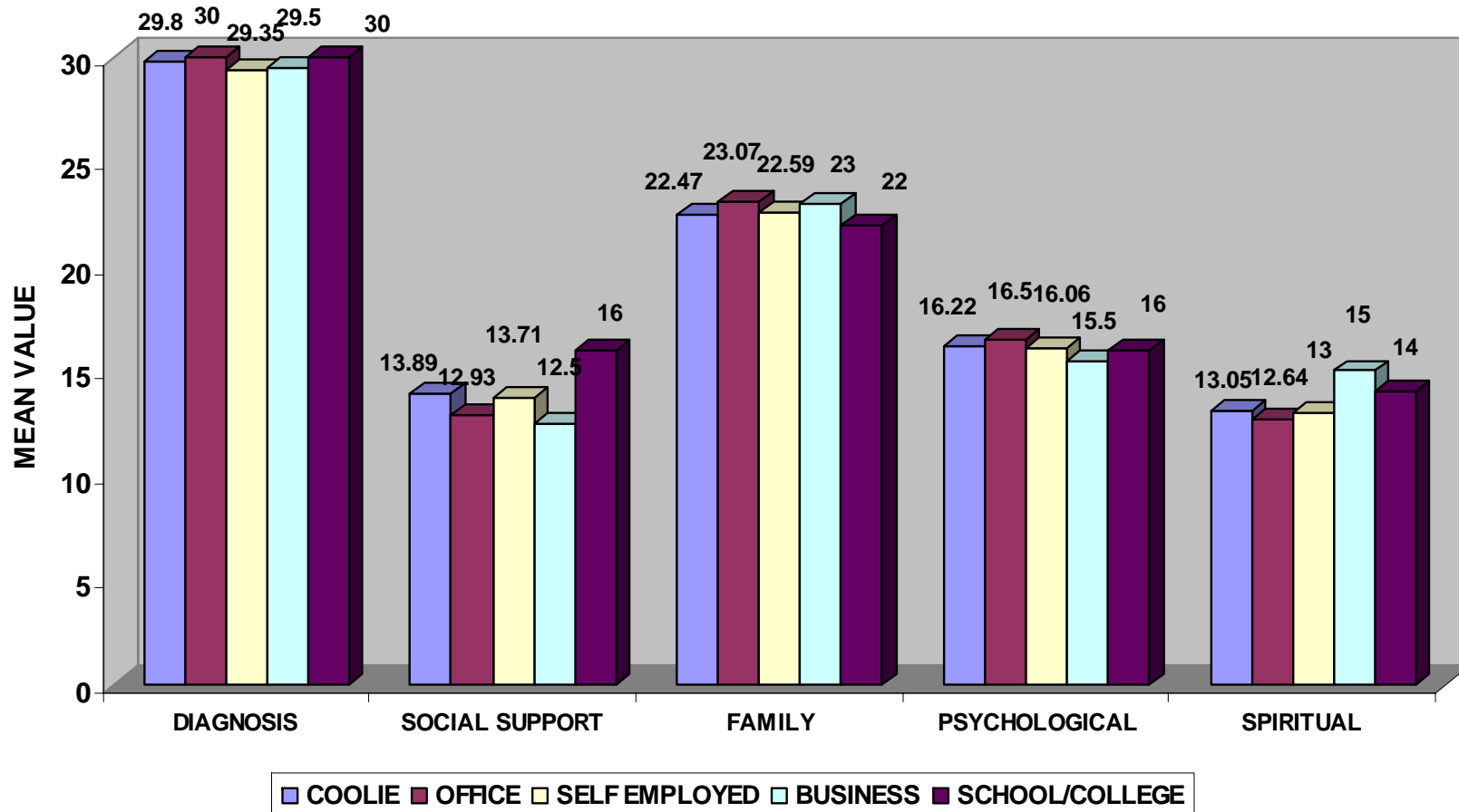


RELATION TO EDUCATIONAL STATUS

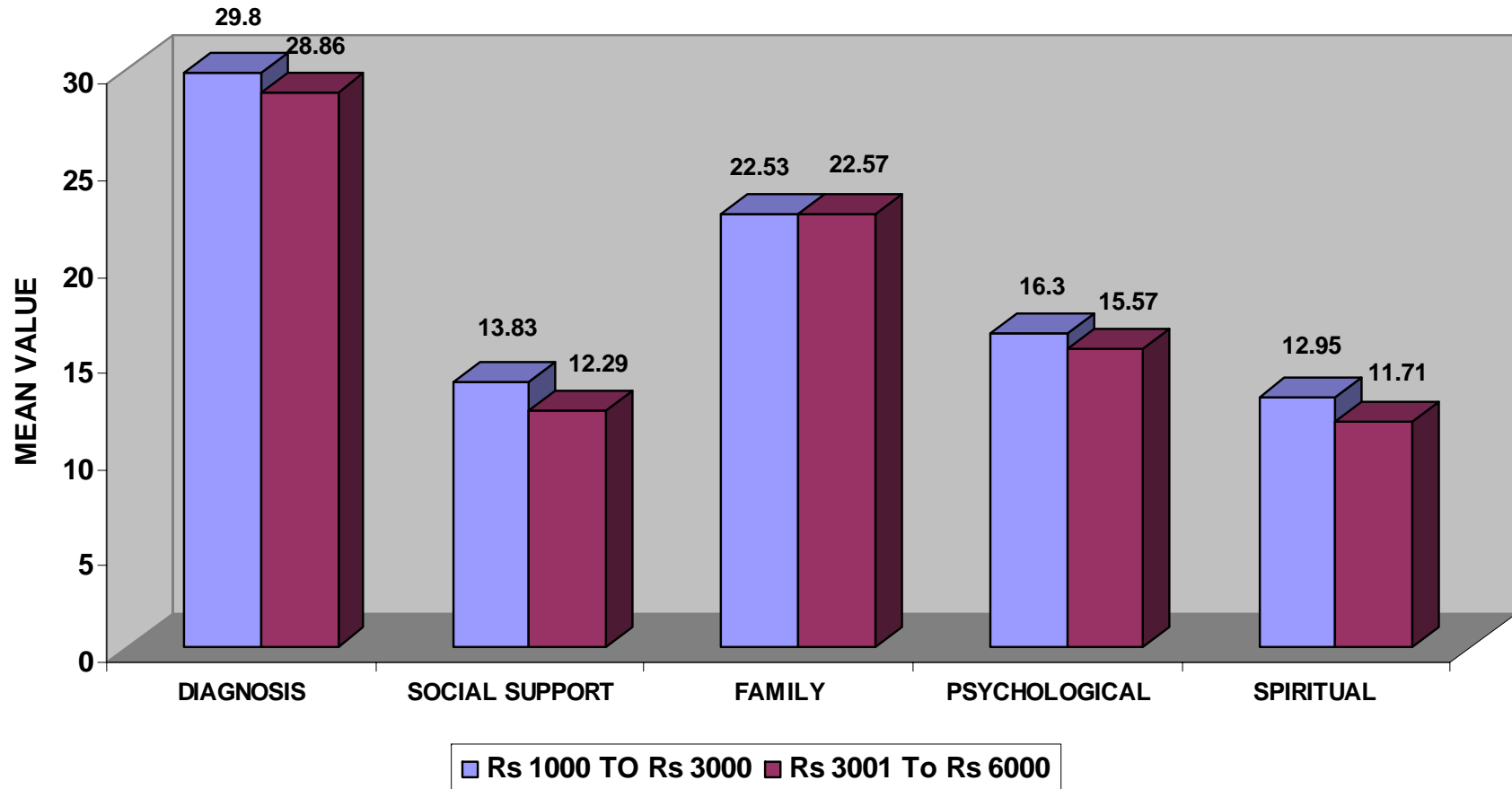


■ PRIMARY SCHOOL ■ SECONDARY SCHOOL ■ HIGHER EDUCATION ■ COLLEGE

RELATION TO EMPLOYMENT STATUS



RELATION TO HOUSE HOLD INCOME



RELATION TO FAMILY

