

JEONÉ °EÉÉ

OE/Æ Ë È EGÀÉ ÈMCEONÉ

- 7.1 |É°iÉÉ ÉxÉÉ
- 7.2 +,aÉÉ°É {ÉriÉÉ}
- 7.3 OE/Æ Ë +ÈHÉ È EGÀÉÈ ÈMCEONÉ
- 7.4 +ÈIÉÉ Ë {ÉÉ°HÉÉ È
- 7.4.1 VÉÉ ÉxÉS°aÉÉ |ÉÉ°É°É°É°É° ÈMCEONÉ
- 7.4.2 |ÉH°ÉÉ°É°É° ÈiÉ°HÉ
- 7.4.3 |ÉH°ÉÉ°É°É° 1/2 |ÉH°É°° MME ÈHÉÉ°
- 7.5 °ÉÉÉVÉÉ° Ë {ÉÉ°HÉÉ È
- 7.5.1 nOVÉ °aÉ°É°É°É° OE/Æ Ë +ÈHÉ È EGÀÉÈ È ±ÈMÉ°É°É°É° ; °ÉÉ°
- 7.5.2 °ÉÉÉHÉÉ° Ë {ÉÉ°iÉÉ
- 7.5.3 |ÉHÉ° |É°É° È EG° Ë °aÉ°É°É°É° 1/2 |ÉH°É°° = ±ÈIÉÉ°É° ±ÈIÉÉ
- 7.6 |ÉH°ÉÉ°É°É° ±ÈVÉ°É°É°É° °aÉÉ°É°É°É°É°É° |ÉÉ°É°É°
- 7.6.1 È EGÀÉ°É°É°É° |ÉÉ°É°É°
- 7.6.2 OE/Æ°É°É°É° |ÉÉ°É°É°
- 7.6.3 °É°É°É°É°É°É° |ÉÉ°É°É°
- 7.7 È ÈÉ°É°É° |É°É° È° 1/2 |ÉH°É°° Ë {ÉÉ°HÉÉ È
- 7.8 ÈxÉ°É°É°É°  
°É°É°É°É°





21.56]CEà {BÉCÉPÝ É EGaiÉa ¼ Eo'ÉO + M'É'É'É + É/É. iÉ 18.62]CEà É EGaiÉa ¼ JÉÉ ±ÉÉ + M'É'É'É + É/É.

**2) +vÉCÉPÝ É EGaiÉa:**

+vÉCÉPÝ É EGaiÉa ¼ °ÉVÉ'É'É(ÉhÉa ¼ÉÉÉÉ) + É/É. ¼ÉÉÉÉ ¼ + É(É±ÉO VÉXÉ'É'É ¼ÉÉÉÉÉ) "É/É ÉÉÉÉO EÉ'Éa ZÉ±'É'É'É'É É/ÉÉ'É iÉa =x/É'É'É @iÉÉÉ É'ÉÉiÉÉ. +vÉCÉPÝ É EGaiÉa VÉÉ iÉa °É]É'É aÉ "É/É aÉÉÉ ±ÉVÉ'É'É'É'É =É'É'É'É'É É'É'É'É'É É'É'É'É'É É'É'É'É'É. EÉ'É'É aÉ É'É'É'É'É iÉa {BÉCÉPÝ ¼ÉÉÉÉÉ ¼ÉÉÉÉÉ É'É'É'É'É'É M'É'É'É'É + °ÉiÉÉ. xÉ'É'É'É'É EÉ'É'É'É iÉa + É(É±Éa VÉXÉ'É'É É'É'É'É'É) + ÉhÉiÉÉ. +vÉCÉPÝ É EGaiÉa ¼ °ÉVÉ'É'É(ÉhÉa (°ÉÉÉÉÉ) Eo'ÉO + M'É'É'É'É + °ÉiÉÉ. iÉ EÉ'É'É + É(É'É'É'É'É Eo'É'É'É'É É EGaiÉa ¼ JÉÉ nÉ + M'É'É'É'É + °ÉiÉÉ. ¼ É EGaiÉa iÉa/É'É aÉÉÉÉ VÉa/É i'É'É ±ÉVÉ'É'É'É'É JÉÉ "Éa É xÉ;É É'É'É'É'É + °ÉiÉÉ.

**iÉCiÉ Gò 7.1**

**±ÉÉÉÉÉÉ'É'É'É'É'É ±ÉVÉ'É'É'É'É É EGaiÉÉÉÉa ÉMÉÉ'É**

	+vÉCÉPÝ É EGaiÉa			{BÉCÉPÝ É EGaiÉa			BÉthÉ		
	Eo'ÉO + M'É'	VÉ'É'É + M'É'	BÉthÉ	Eo'ÉO + M'É'	VÉ'É'É + M'É'	BÉthÉ	Eo'ÉO + M'É'	VÉ'É'É + M'É'	BÉthÉ
°É'É'É	50	11	61	22	19	41	73	29	102
]CEàÉ'É	49.01	10.78	59.80	21.56	18.62	40.19	71.56	28.43	100

+ÉVÉ'É'É'É'É EÉ'É'É'É'É +ÉVÉ'É'É'É'É 2012-13.

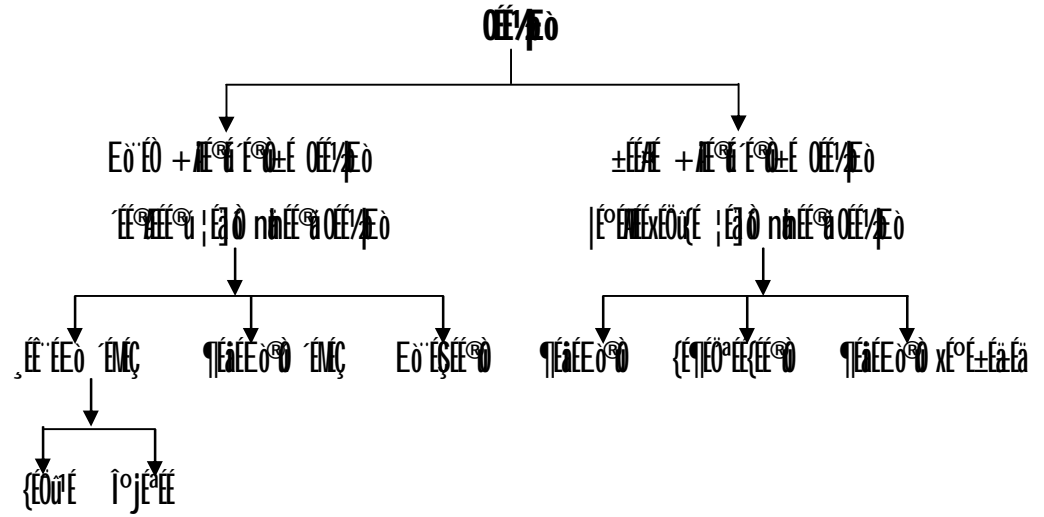
°ÉÉÉÉÉ'É'É'É'É'É BÉthÉ É'É'É'É'É'É É EGaiÉÉÉÉaÉ'É'É'É'É Eo'Éa + °ÉiÉ 49.01]CEà É EGaiÉa ¼ Eo'ÉO + M'É'É'É'É + É/É. iÉ 10.78]CEà +vÉCÉPÝ É EGaiÉa ¼ JÉÉ VÉ'É'É ±ÉÉ + M'É'É'É'É + É/É. BÉthÉ +vÉCÉPÝ É EGaiÉa 59.80]CEà + É/É. {BÉCÉPÝ É EGaiÉa ¼ BÉthÉ 40.19]CEà + É/É. {BÉCÉPÝ É EGaiÉaÉÉÉa +ÉVÉÉO ]É'É'É Eo'ÉO + M'É'É'É'É + É/É iÉa 21.56]CEà + É/É

{BÉCÉPÝ +ÉthÉ +vÉCÉPÝ É EGaiÉÉÉÉa ÉMÉÉ'É Eo'Éa + °ÉiÉ nÉ/É {ÉO'É É EGaiÉÉÉÉÉ °É/ÉÉÉ VÉ'É'É + °É'ÉÉÉa ]Éh'É'É'É ±ÉVÉ'É'É'É'É É'É'É'É'É aÉÉa É'É'É É EGaiÉa ]É'É'É ¼ + M'É'É'É'É xÉ'É'É'É + É/É {ÉO'É É EGaiÉÉÉÉa ]É'É'É iÉÉÉÉÉa + ÉVÉÉO + É/É

**ଓଡ଼ିଆ ଗୀତ:**

ଓଡ଼ିଆ ଗୀତ + ଓଡ଼ିଆ ଗୀତ ଓଡ଼ିଆ ଗୀତ ଓଡ଼ିଆ ଗୀତ ଓଡ଼ିଆ ଗୀତ ଓଡ଼ିଆ ଗୀତ  
 ଓଡ଼ିଆ ଗୀତ ଓଡ଼ିଆ ଗୀତ ଓଡ଼ିଆ ଗୀତ ଓଡ଼ିଆ ଗୀତ ଓଡ଼ିଆ ଗୀତ ଓଡ଼ିଆ ଗୀତ  
 ଓଡ଼ିଆ ଗୀତ ଓଡ଼ିଆ ଗୀତ ଓଡ଼ିଆ ଗୀତ ଓଡ଼ିଆ ଗୀତ ଓଡ଼ିଆ ଗୀତ ଓଡ଼ିଆ ଗୀତ

- 1) ଓଡ଼ିଆ ଗୀତ ଓଡ଼ିଆ ଗୀତ 2) ଓଡ଼ିଆ ଗୀତ ଓଡ଼ିଆ ଗୀତ



ଓଡ଼ିଆ ଗୀତ + ଓଡ଼ିଆ ଗୀତ (ଓଡ଼ିଆ) ଓଡ଼ିଆ ଗୀତ ଓଡ଼ିଆ ଗୀତ ଓଡ଼ିଆ ଗୀତ  
 + ଓଡ଼ିଆ 1) ଓଡ଼ିଆ ଗୀତ ଓଡ଼ିଆ ଗୀତ 2) ଓଡ଼ିଆ ଗୀତ ଓଡ଼ିଆ ଗୀତ

**☆ ଓଡ଼ିଆ ଗୀତ ଓଡ଼ିଆ ଗୀତ:**

ଓଡ଼ିଆ ଗୀତ ଓଡ଼ିଆ ଗୀତ ଓଡ଼ିଆ ଗୀତ ଓଡ଼ିଆ ଗୀତ ଓଡ଼ିଆ ଗୀତ ଓଡ଼ିଆ ଗୀତ  
 ଓଡ଼ିଆ ଗୀତ ଓଡ଼ିଆ ଗୀତ ଓଡ଼ିଆ ଗୀତ ଓଡ଼ିଆ ଗୀତ ଓଡ଼ିଆ ଗୀତ ଓଡ଼ିଆ ଗୀତ  
 ଓଡ଼ିଆ ଗୀତ ଓଡ଼ିଆ ଗୀତ ଓଡ଼ିଆ ଗୀତ ଓଡ଼ିଆ ଗୀତ ଓଡ଼ିଆ ଗୀତ ଓଡ଼ିଆ ଗୀତ

ଓଡ଼ିଆ ଗୀତ ଓଡ଼ିଆ ଗୀତ ଓଡ଼ିଆ ଗୀତ ଓଡ଼ିଆ ଗୀତ ଓଡ଼ିଆ ଗୀତ ଓଡ଼ିଆ ଗୀତ  
 उच्च दर्जा असलेले जसे देवणी, लालकंधारी गाय, वळू, मन्हाटवाडी म्हैस, उस्मानाबादी  
 ଓଡ଼ିଆ ଗୀତ + ଓଡ଼ିଆ ଗୀତ = ଓଡ଼ିଆ ଗୀତ ଓଡ଼ିଆ ଗୀତ ଓଡ଼ିଆ ଗୀତ ଓଡ଼ିଆ ଗୀତ  
 ଓଡ଼ିଆ ଗୀତ ଓଡ଼ିଆ ଗୀତ ଓଡ଼ିଆ ଗୀତ ଓଡ଼ିଆ ଗୀତ ଓଡ଼ିଆ ଗୀତ ଓଡ଼ିଆ ଗୀତ  
 ଓଡ଼ିଆ ଗୀତ ଓଡ଼ିଆ ଗୀତ ଓଡ଼ିଆ ଗୀତ ଓଡ଼ିଆ ଗୀତ ଓଡ଼ିଆ ଗୀତ ଓଡ଼ିଆ ଗୀତ  
 ଓଡ଼ିଆ ଗୀତ ଓଡ଼ିଆ ଗୀତ ଓଡ଼ିଆ ଗୀତ ଓଡ଼ିଆ ଗୀତ ଓଡ଼ିଆ ଗୀତ ଓଡ଼ିଆ ଗୀତ







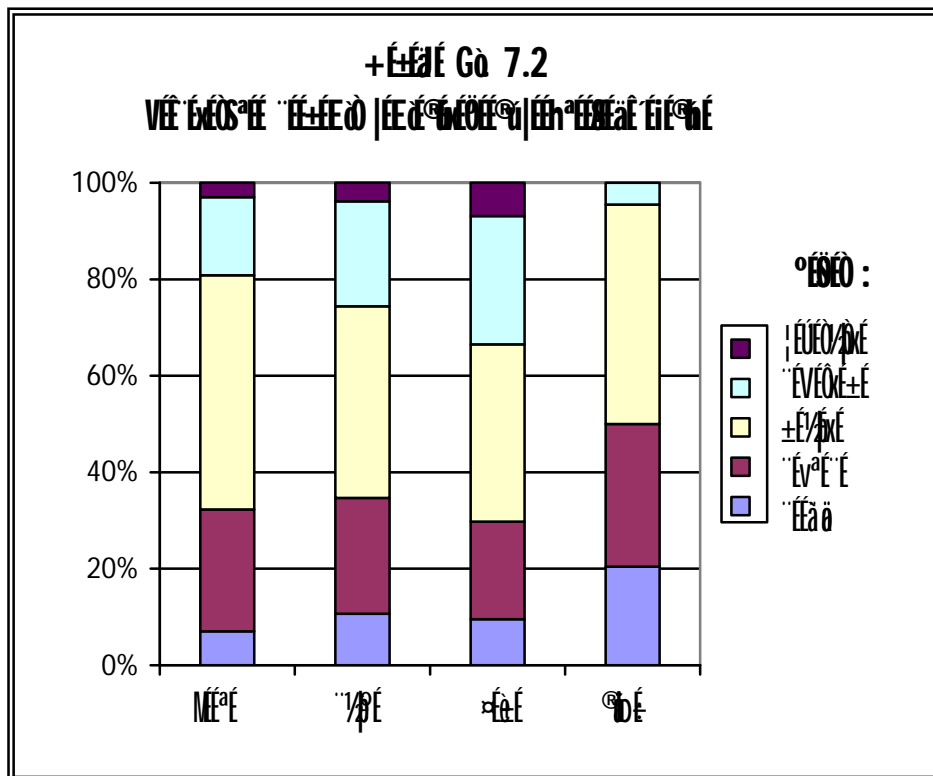


### Tableau 7.3

Tableau 7.3 : Répartition des dépenses par secteur d'activité (en millions de CFA francs)

N°	Secteur	2014	2015	2016	2017	2018	Total
1	Mécatronique	7	25	48	16	3	99
	Mécatronique (en %)	7.0	25.25	48.48	16.16	3.0	100
2	Transport	34	75	124	68	12	313
	Transport (en %)	10.86	23.96	39.61	21.72	3.83	100
3	Énergie	18	38	69	50	13	188
	Énergie (en %)	9.57	20.21	36.70	26.59	6.91	100
4	Services	9	13	20	2	0	44
	Services (en %)	20.45	29.54	45.45	4.54	0.0	100
5	Bâtiment	68	151	261	136	28	644
	Bâtiment (en %)	10.55	23.44	40.52	21.11	4.34	100

Source : Direction Générale de l'Énergie et de l'Électricité, 2014-2015.





























































## References:

1. Birtkett J.U. (1952) : “The Trade in Cattle of Northern Nigeria.”, West African Review, Vol. 23, Pp. 296-320.
2. Brombly R.J. (1971) : “Markets in Developing Countries”, A Review of Geography, Vol. 56, Pp. 124-132.
3. Deshmukh V.L. (1990) : “Periodic Markets – A Study of Seven weekly markets circuits with special reference to traders characteristics”, unpublished Ph.D. thesis submitted to Pune University, Pune.
4. Dhume M.N. (1985) : “A study of regulated cattle markets of Maharashtra State”, Agricultural Marketing, Vol. 28, No.3, pp. 23-27.
5. Dixit R.S. (1980) : “Role and Relation of Market Centres in Socio-Economic Development”, Indian Journal of Marketing, Vol.11, No.1-2, Pp. 21-25.
6. Jagadale S.D. (1990) : “A study of livestock market in Pune District”, unpublished M.Phil Dissertation submitted to Pune University, Pune.
7. Kote D.B. (2003) : “Marketing Management of Buffaloes : A Case Study of Ghodegaon Market in Ahmednagar District”, Agricultural Marketing, Vol.5 , No. 4, Pp. 21-24.
8. Khan A. I. (2006) : “The Cattle Marketing System and Network in Amaravati District ( A Geographical Study)”, Unpublished Ph.D. Thesis submitted to Sant Gadgebaba University, Amaravati.
9. Makhijani H.J. (1961) : “Marketing of Dairy Cattle”, Agricultural Marketing Vol. IV, No.2, PP. 23-25.
10. Okaiyeto, P. (1980) : “Cattle Marketing Channels in Mortern Nigeria”, Nappl A.B.U Zaire, Nigeria.

11. Pandey U.K. and Arora, K. (1987) : "Structure and Conduct of Cattle Markets in Hariyana", *Agricultural Marketing*, Vol. 27, No. 5, PP 78-81.
12. Sidhu D.S. (1964) : "Malpractices in Catle Markets", *Agricultural Marketing*, Vol. 7, No.1, PP 5-8.
13. Smith C.A. (1974) : "Economic of Marketing Systems", *Models from Economic Geography of Annual Review of Anthropology*, Vol.3 , P. 167-201.
14. Smith, R.H.T.C. (1971) : "Theory of Periodic Markets on Summer and Trader Behaviour", Preconference publication of papers, Annual Meeting of the Canadian Association of Geographers, Waterloo.
15. Tamaskar B.G. (1983) : "Trade Travel Behaviour and Periodic Market Cycle in the Arvi Upland", *The Indian Journal of Marketing Geography*, Vol. 1, Pp. 1-3.
16. Ubale P.P. and Lokhande T.N. (2011) : "A Geographical Study of Problems faced by Farmers Traders and Brokers on Cattle Market Centres in Solapur District of Maharashtra *Journal of Research Development*, Vol. I, Issue7 , Pp. 39-43.
17. Ukey K.A. (2001) : "The Cattle Mrketing System Network in Aurangabad District", Unpublished Ph.D. Thesis submitted to the Aurangabad University, Aurangabad.
18. Vhatkar (1990) : "A Study of Cattle Marketing in Kolhapur District", Unpublished M.Phil. Dissertation submitted to Shivaji University, Kolhapur.
19. Vidhate H.G. (2006) : "The Organization and Management of weekly Cattle Bazaars", Kailas publications Aurangabad.