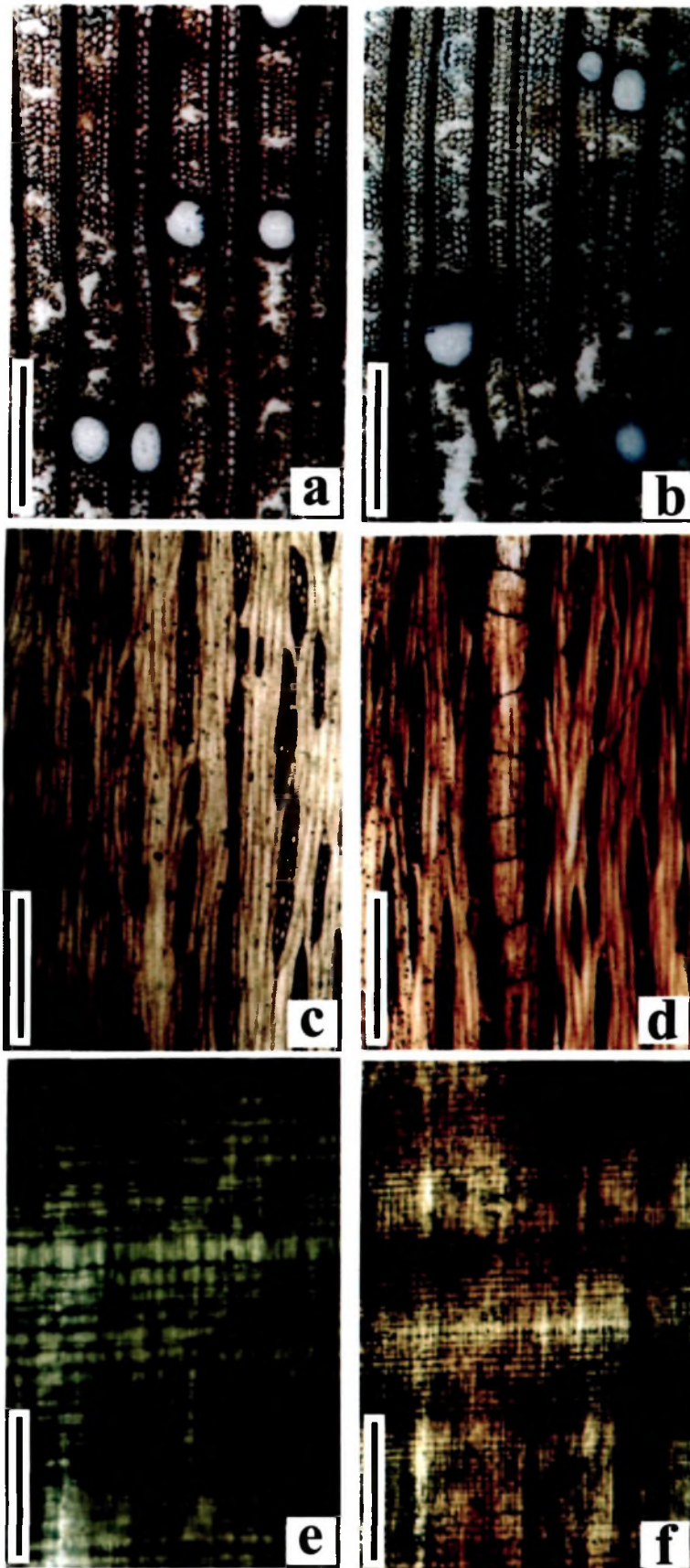


PLATE - XI



Ailanthoxylon indicum Prakash et al.

PLATE - XII

***Ailanthoxylon indicum* Prakash et al.**

(Figs. a-f)

Fig. a - T.S. of entire wood with pith. Scale bar = 1 cm.

Fig. b - T.S. enlarged. Scale bar = 0.4 cm.

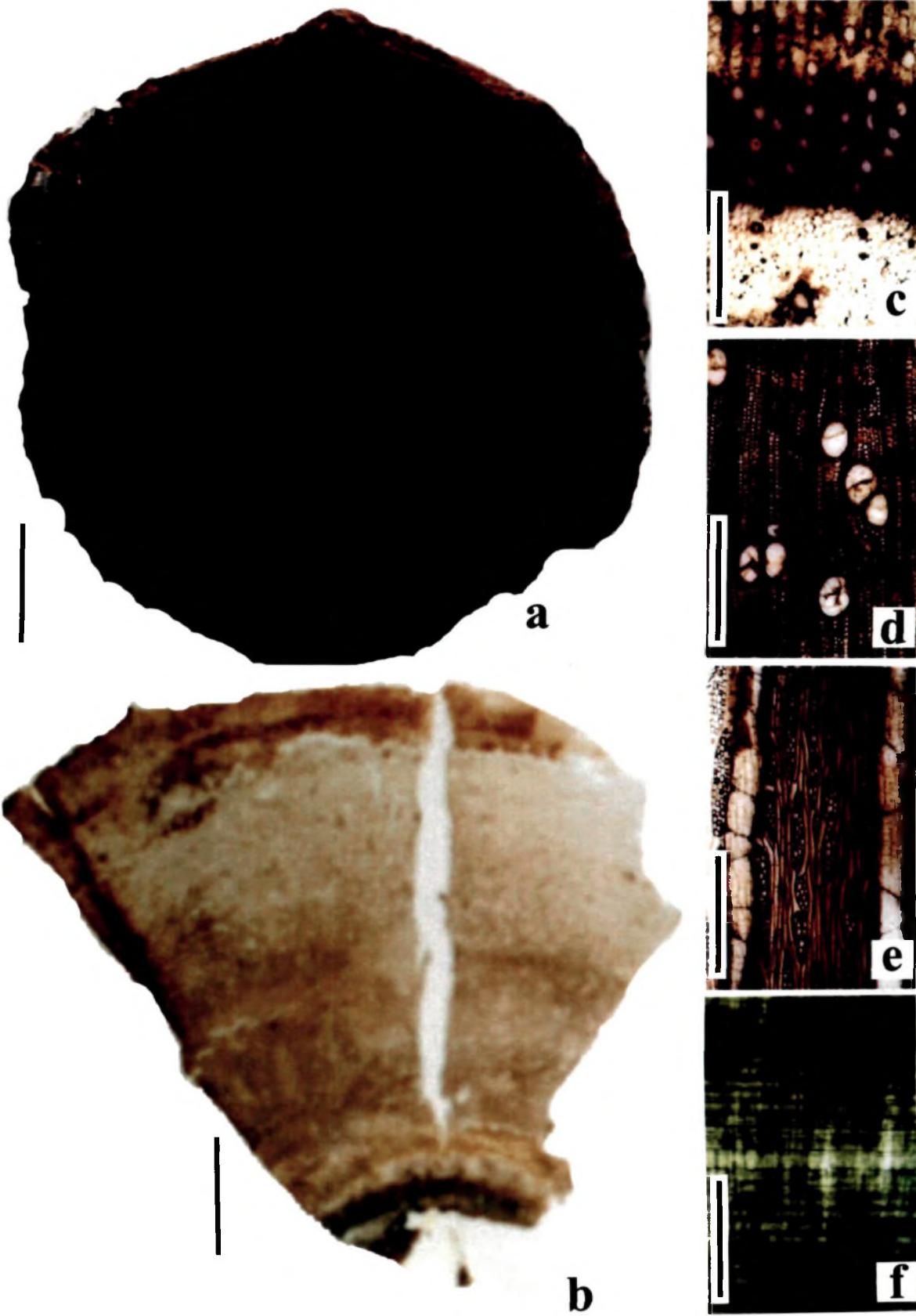
Fig. c - T.S. through pith, primary and secondary xylem.
Scale bar = 60 μ m

Fig. d - T.S. showing distribution of vessels, xylem rays and
parenchyma. Note the presence of tyloses in the
vessels. Scale bar = 120 μ m

Fig. e - T.L.S. showing xylem rays, parenchyma, tracheids
and vessels with scalariform pitting.
Scale bar = 120 μ m

Fig. f - R.L.S. showing homogeneous xylem rays.
Scale bar = 120 μ m

PLATE - XII



Ailanthoxylon indicum Prakash et al.